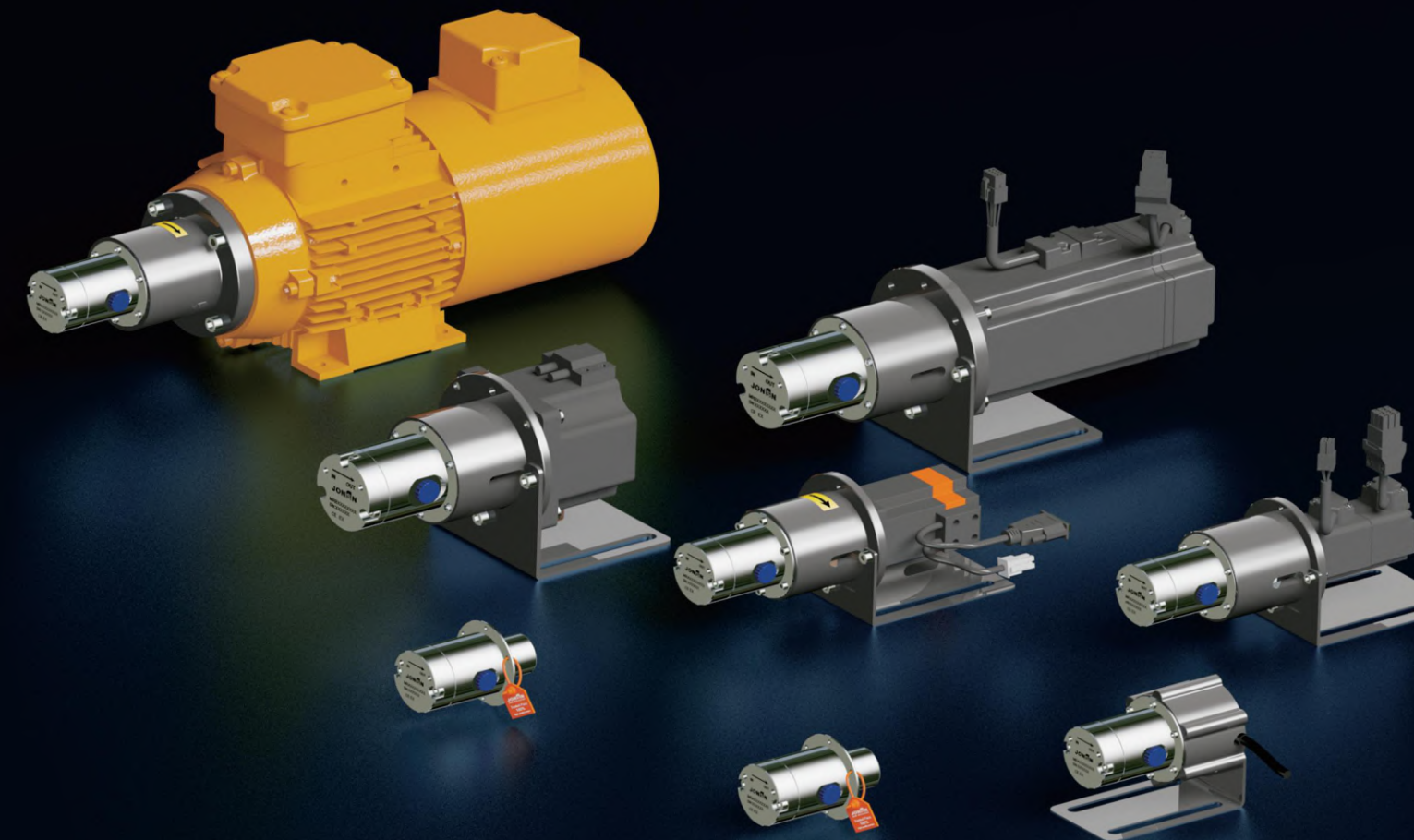




JONSN
MICRO GEAR PUMPS

JONSN
MICRO GEAR PUMPS



Attentively focusing on each high precision micro gear pumps is our initial aspiration

■ SHANGHAI JONSN FLUID EQUIPMENT CO.,LTD

Address: Room 403, Building 3, No.59 Jinma Rd,
Economic & Development District, Songjiang
Area, Shanghai, China

Tel: 021-34720020

Fax: 021-67689517

Website: www.jonsn.cn

Email: lijun@jonsn.cn

■ JONSN (GANZHOU) FLUID TECHNOLOGY CO., LTD

Address: Workshop 2, No. 6 Jingsan Rd,
Economic & Development District,
Ganzhou City, Jiangxi Province, China

Website: www.jonsn.com

Email: sales@jonsn.com (International department)

MIR

**PRECISION
MICRO GEAR PUMP**

ENTERPRISE PROFILE

Shanghai JONSN Fluid Equipment Co.,Ltd. was established in 2010. It is acompany with world-renowned imported pumps as its technical background. It hastwo business divisions, namely the JONSN brand pump manufacturing division andthe imported pumptrading division.An excellent R&D and innovation teamprovides customerswith fluid transportation solutions that integrate design,production and sales.

In 2019, Shanghai JONSN Fluid Equipment Co., Ltd. made a new plan toestablish a new factory in the central region. In 2020, the new factory was officiallysettled in Ganzhou National Economic and Technological Development Zone.JONSN bucked the trend and formed a new technology development team,cooperated with foreign companies, adopted foreign advanced manufacturingtechnology and lean management, selected high-quality raw materials, designedand manufactured precision gear metering pumps with high cost performance.easv installation and maintenance

TECHNOLOGY
PUMPS



DEVELOPMENT PATH



2010

Shanghai Jonsn was established. The company's coremanagement has dozens years of experience of Europeanand the Americanimported gear pumps, magnetic pumpsbarrelpumps,diaphragm pump, and special pump for hightemperature, high pressure and corrosive industry etc.

2011

Jonsn has established its own R&D center of precision gearpumps. Started ERP management system. Designed thewhole series of Jonsn barrel pumps, passed test andobtained the CE certification.

2012

Shanghai Jonsn Fluid Equipment Co., Ltd. changed from atrade-oriented company to a production-orientedenterprise. In the same year, Jonsn barrel pump seriesproducts were put into production one by one and sold toforeign markets.Jonsn precision micro gear pump designwas completed at the same year.

2013

Jonsn precision micro gear pump prototype has passed theverification. Its design life and process parameters farexceed similar products in Europe and America. Thecompany fully focused on the R&D, design and productionof high-precision gear pumps..

2014

Jonsn micro gear pumps achieved mass production.And westarted the design of DX high viscosity gear pumps.

2015

The JONSN trademark has been registered successfully, and 2invention patents and 7 utility model patents have been appliedfor.JONSN precision micro gear pump finalized massproduction.Successfully applied and exported to European andAmerican markets.Successfully signed Sinopec,CNOOCTianjin Jereh and many other enterprises.

2016

DX series high-viscosity gear pump finalized production.Inthe same year, the company's gear pump performanceachieved an annual output value of more than 30 million.

2017

Import product code tracking and traceability systemStarted 6S on-site management system.

2018

The strategic positioning of the enterprise has beenupgraded to "reliable high-quality pump supplier"Focus on quality control, achieve 100% factory test passand make trustworthy good products.

2019

JONSN precision gear pump successfully obtained CECertification and applied to SCR exhaust gas treatmentsystem in shipbuilding industry Nippon Kaiji Kyokai staffpassed the site inspection test, Jonsn obtained theClassNK" license from Nippon Kaiji Kyokai. Become a fluidcontrol system solution provider for the new energy lithiumbattery industry.

2020

Launch a new LOGO brand identity and brand conceptFocus on R&D and production of high-precision gearpumps The new factory joint with the British Brontz Groupofficially settled in Ganzhou.The company started theresearch and development of DP series high viscosity gearmetering pump.

2021 to present

Started the TUV Rhineland ISO9001 quality managementsystem certification work.The first sample pump of DPseries high-viscosity gear metering pump enters the testverification stage..

COOPERATIVE PARTNER



MR Series
MR series precision magnetic gear pump

DP Series
DP series medium and high viscosity precision gear metering pump

DX Series
DX series high temperature and high viscosity gear metering pump

Acting
Acting as an agent for BRONTZ internal gear pumps





中船重工

亨通光电
HENG TONG OPTIC-ELECTRIC

华中科技大学








Look forward to working with you
.....


HONORARY PATENT


We focus on the technical development of precision gear pumps. We are engaged in precisionproduction. Skilled technology and craftsmanship are the main characteristics of our work. The birthof every Jonsn precision gear pump embodies the beauty of craftsmen. Their strict requirements forproducts and outstanding performance have contributed to the development of the company.Jonsn company has successively obtained 7 utility model patents. 2 invention patents. meanwhilewe have obtained the German TUV Rheinland ISO9001 quality management system certification,CE certification ABS certification, 、BV certification, Nippon Kaii Kyokai certification, etc.





 **TÜV Rheinland ISO9001**
quality management certification





 **BV certification**





 **ABS certification**




 **2 invention patents**
7 utility model patents



 **RoHS Test Report**



 **CE certification**

MR SERIES MICRO GEAR PUMPS

With dozens years of technology accumulating, Jonsn gear pumps have grew up to be the key control device for on-line transport in high end manufacturing industries.

1 Pulsation-free precise conveying

Positive displacement pumps provide continuous andaccurate fluid delivery through gears. When used withservo or stepper motors, the delivery accuracy can reach+/-0.5%.

2 Strong vacuum suction highconveying pressure, stable

Realize low viscosity liquid transfer under midiumhigh pressure.

3 No leakage

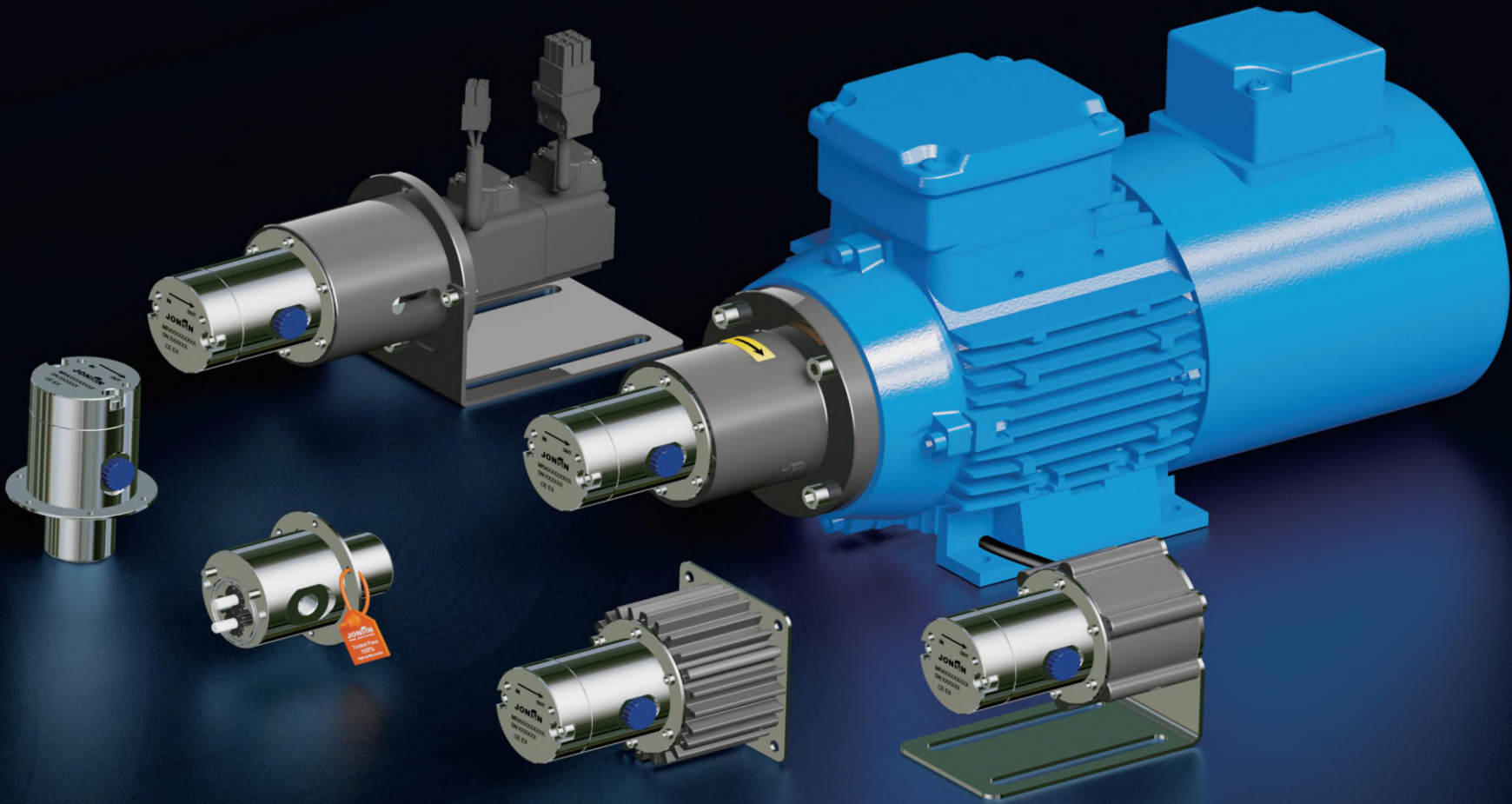
Magnetic drive and static O-ring seal can ensure thatthe medium in the pump is isolated from the outside world.

4 Excellent workmanship, modular design

The whole series of gear shafts adopt speciamodified PEEK material + heat treatment process + high-strength zirconia ceramics. It has been tested andverified to maintain high linearity after 2 hours of idling(dryrunning)underextreme conditions.

5 Selection specialization

Thousands of mciro gear pumps applicationexperience help to accumulate a large amount ofexperimental data, professional selection and evaluationhelp you to formulate ideal solutions and reduce risks.



Performance parameter

Flow range	0.001 - 64L/min
Inlet pressure	-0.98 - 25bar
Differential pressure	0 - 25.5 bar Depends on material viscosity
Temperature	-40 - 160°C Other temperatures can be customized
Viscosity range	0.4 - 3000cps
Maximum density	1.8
Motor can be equipped	AC motors, Brushless DC, Servo Frequency conversion explosion-proof motor
Import and export thread	NPT1/8、NPT1/4、NPT3/8、NPT1/2、NPT3/4 or G1/8、G1/4、G3/8、G3/4
Non-standard customization	OEM mechanical equipment matching servo system customization

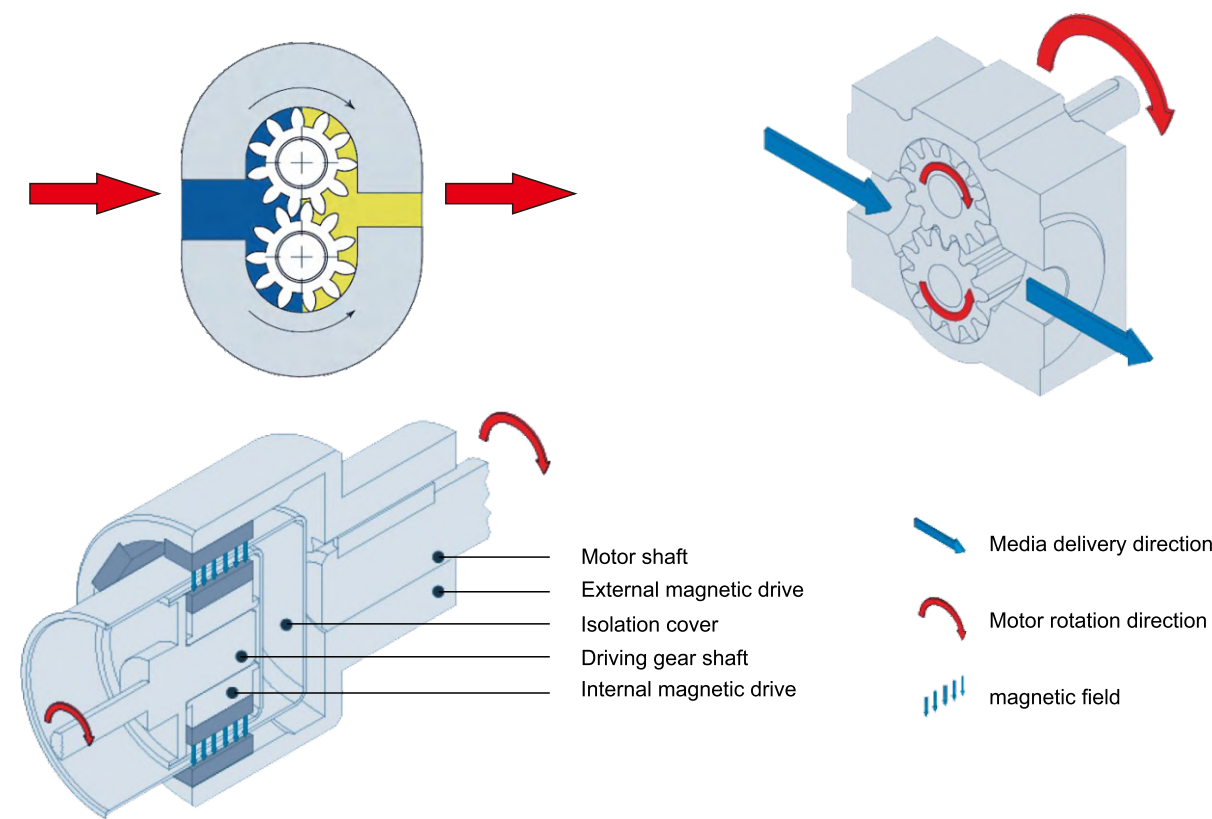
Theoretical flow

Pump		Motor speed (rpm)				
Order No	Size	750	960	1450	2850	3300
MRA5/13	1/8	0.150	0.192	0.290	0.570	0.660
MRA7/13		0.293	0.374	0.566	1.112	1.287
MRA10/13		0.450	0.576	0.870	1.710	1.980
MRA12/13		0.525	0.672	1.015	1.995	2.310
MRB10/16	1/4	0.750	0.960	1.450	2.850	3.300
MRB12/16		0.900	1.152	1.740	3.420	3.960
MRB17/16		1.275	1.632	2.465	4.845	5.610
MRB19/16		1.425	1.824	2.755	5.415	6.270
MRC15/22	3/8	1.800	2.304	3.480	6.840	
MRC20/22		2.625	3.360	5.075	9.975	
MRC8/37		3.000	3.840	5.800	11.400	
MRC12/37		4.500	5.760	8.700	17.100	
MRD25/30	1/2	5.250	6.720	10.150	19.950	
MRE18/37	3/4	6.750	8.640	13.050	25.650	
MRE24/37		9.000	11.520	17.400	34.200	
MRE34/37		12.750	16.320	24.650	48.450	
MRF34/39	1 1/4	16.500	21.120	31.900	62.700	

Theoretical flow (L/min)

■ Note: The above flow data is tested with water as the medium and no pressure at the pump outlet. Due to the gap loss of the gear rotation, the actual flow will vary according to the medium viscosity, pressure and motor speed. The test data tells us: When medium viscosity and pressure difference keep unchanged, as long as the motor speed is stable, the flow is stable. The flow rate depends on the motor output speed and outlet pressure. So it is vital to choose a high effective, stable motor. Users who use precision gear pumps for the first time can download our company's selection data sheet and tell us the relevant parameters. We have professional pump and motor selection software and application experience of tens of thousands of pumps. We will provide a detailed selection report of the pump, we are able to customize a professional system solution for you. For details, please consult the sales staff.

COMPLETELY SOLVE THE MEDIUM LEAKAGE MAGNETIC GEAR PUMPS



Configuration code

MR	A	18	S	Z	K	L	F
Pump serial	Inlet & outlet thread A:G1/8 B:G1/4 C:G3/8 D:G1/2 E:G3/4 Others connection to be customized	Displacement cc/rev For example: 18=0.18cc/rev	Pump material S:316L P:PPS H:ALLOY C (for acidic medium)	Gear shaft material	Bearing K:PEEK F:PTFE	Structure type L:inlet & outlet of 180° (standard) B: inlet & outlet of 90	O-Ring F:PTFE M:FKM E:EPDM P:FFKM L:LDR



Z: Gear PEEK + Nano-ceramic shaft (for low viscosity non-abrasive media)
Standard
K:GearPEEK+shaft 316(for neutral low viscosity non-abrasive media)
C:Nano-ceramic (for low viscosity fine particle abrasive media)
S:Alloy (for medium with better lubricity)

PRODUCT APPLICATION INDUSTRY

MR series precision micro magnetic gear pump is applicable for: liquid micro-transfer, adding, lubricating, spraying, dispensing, sampling, coding, boosting, circulating, coating, painting, metering and other delivery systems.

It is applicable to automation and process control systems, micro-transfer system, circulating booster systems, automatic feeding(dosing)system, chip processing equipment, laboratory equipment, cooling systems(refrigerant circulating pump), foundry machinery, packing machinery, cleaning system,additive adding system, chemical metering system, and small test/pilot plant, etc, where request small flow, pulsation free, high linearity, high pressure differential, 0 leakage, precision metering and stable flow rate.

Small flow	High pressure	High linearity
Accurate measurement	Pulsation-free delivery	



Semiconductor electronics industry



Biopharmaceutical industry



Fine chemical industry



Machinery industry



Cosmetics industry

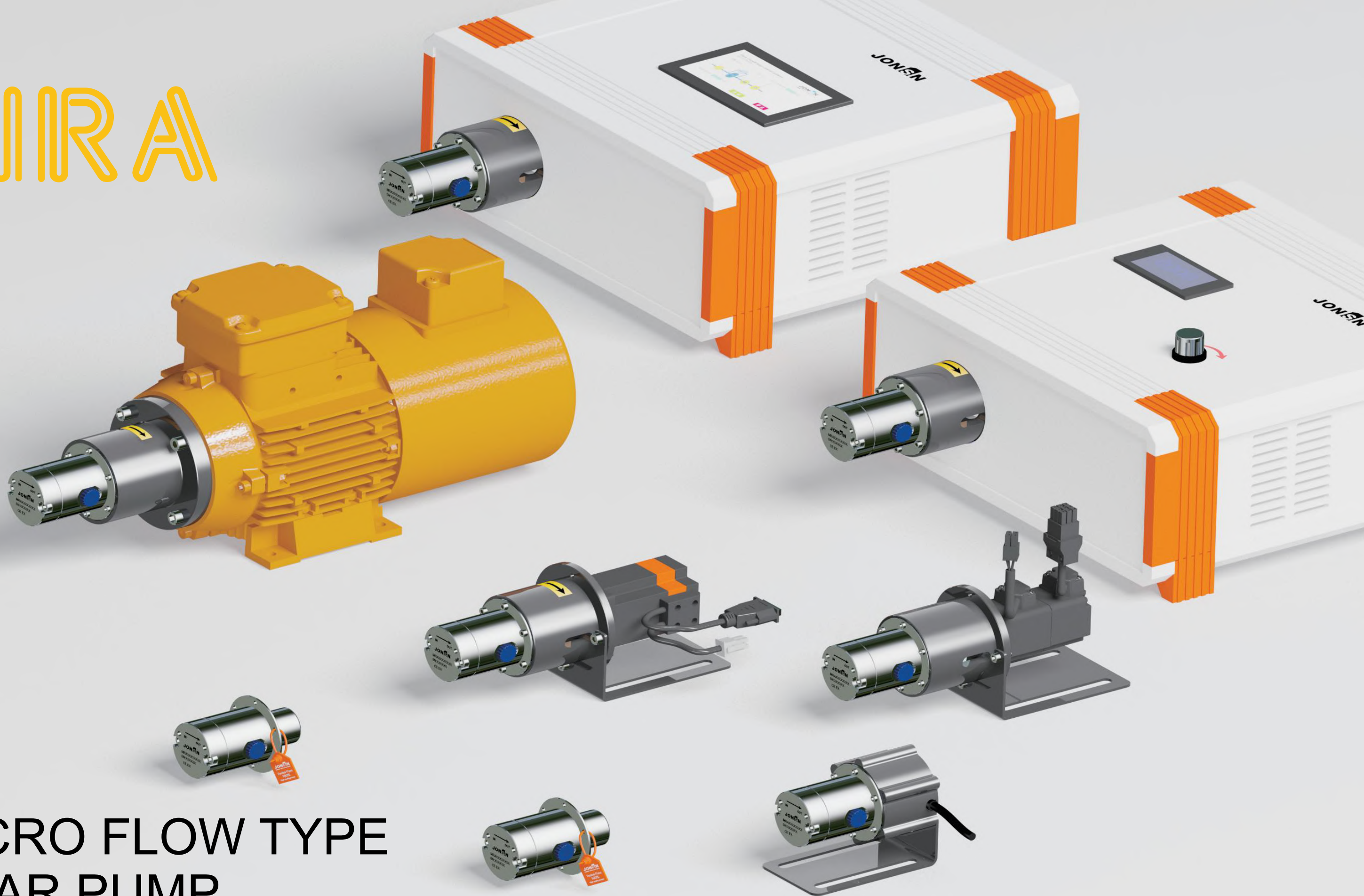


Food processing industry

Various fluid media transported

- Sodium hydroxide
- Tetrahydrofuran
- White oil
- Flux
- Methanol
- Deionized water
- Glycerol
- Diisocyanate
- Butyl lithium
- kerosene
- NMP
- Hydrogen Peroxide
- Dichloromethane
- Ink
- Emollients
- Pyridine
- Polyols, polymers
- Adhesives
- Paraffin oil
- Pure water transport
- Ethylene glycol
- Urea

MIRA



MICRO FLOW TYPE GEAR PUMP



MRA

MICRO GEAR PUMPS

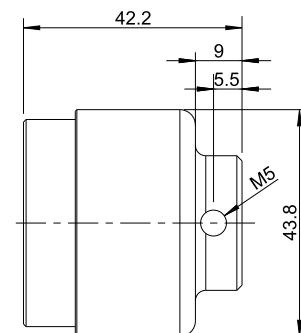
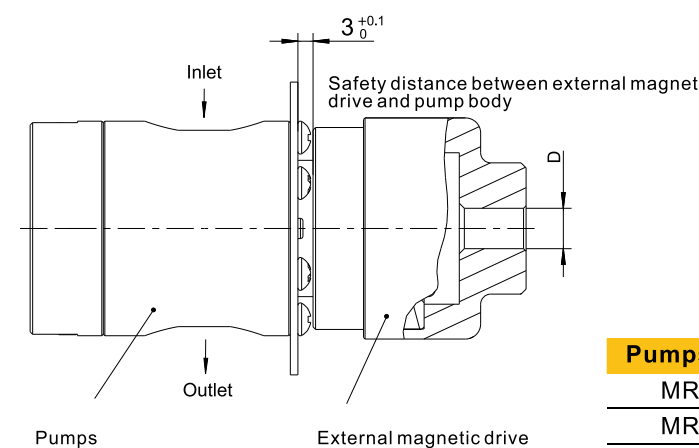
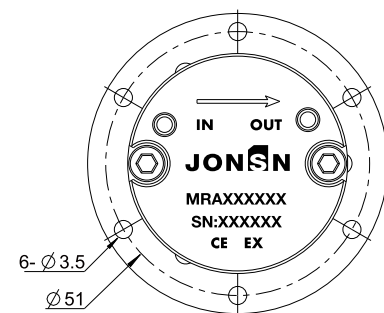
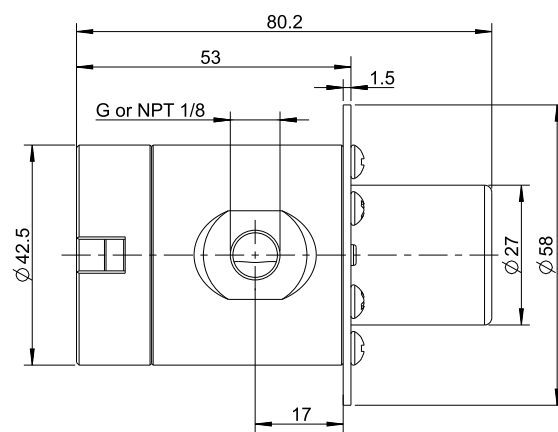
Micro flow type

Resolvable working conditions

Flow rate 100-2000ml/min

Working pressure difference: 0.5-25bar

Viscosity 0.4-3000m.Pas (approximate to water)



D
5
6
8
11
14
19

Pumps order NO.

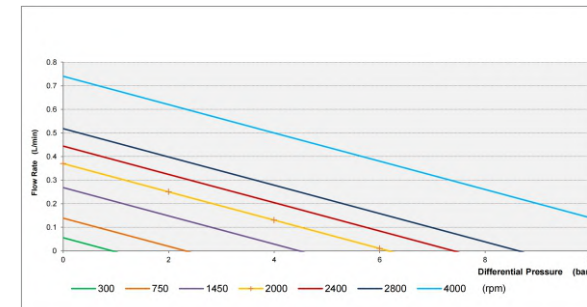
MRA 5/13
MRA 7/13
MRA 10/13
MRA 12/13

MRA pumps head uniform dimensions

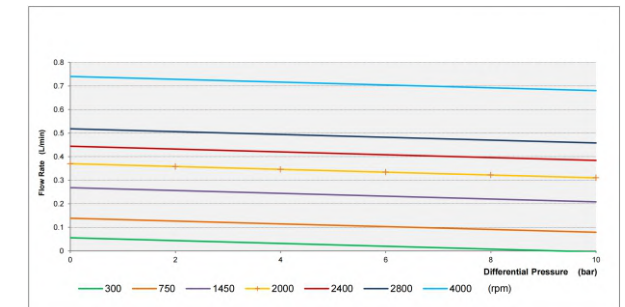
Performance curve

Realize the flow rate adjustable with high linearity by adjusting the motor speed.

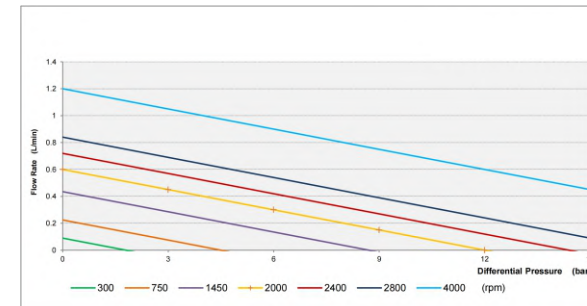
Pump Head MRA 5/13
Measured with water 1 mPas & 40°C



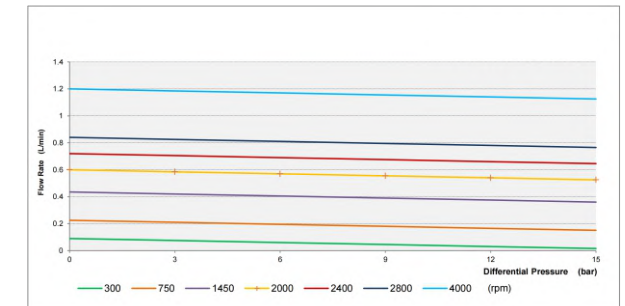
Pump Head MRA 5/13
Measured with oil 100 mPas & 40°C



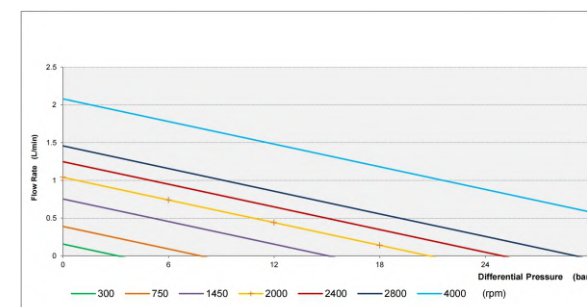
Pump Head MRA 7/13
Measured with water 1 mPas & 40°C



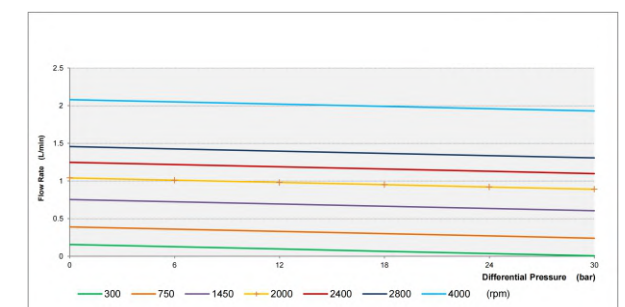
Pump Head MRA 7/13
Measured with oil 100 mPas & 40°C



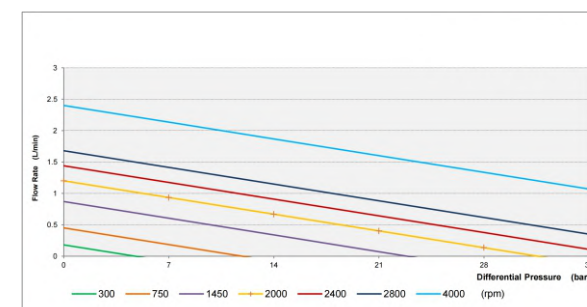
Pump Head MRA 10/13
Measured with water 1 mPas & 40°C



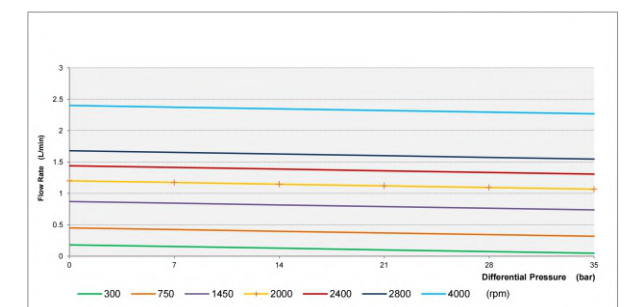
Pump Head MRA 10/13
Measured with oil 100 mPas & 40°C



Pump Head MRA 12/13
Measured with water 1 mPas & 40°C

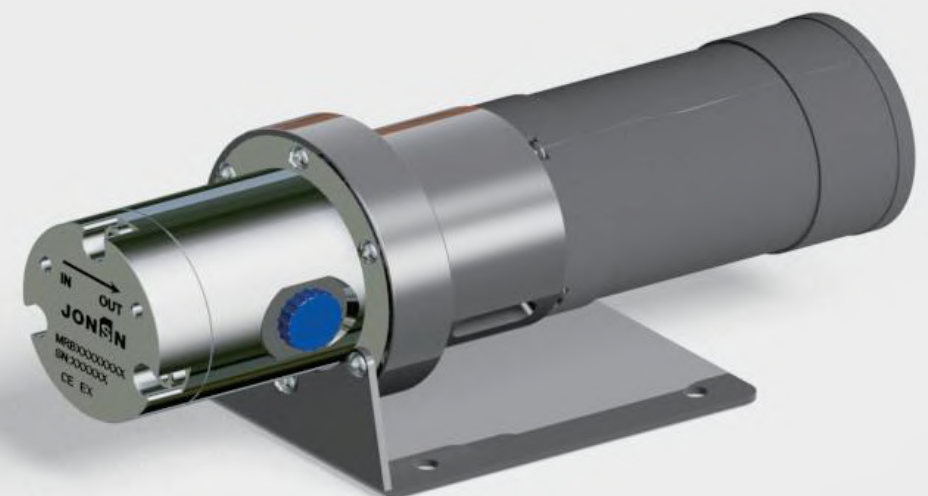
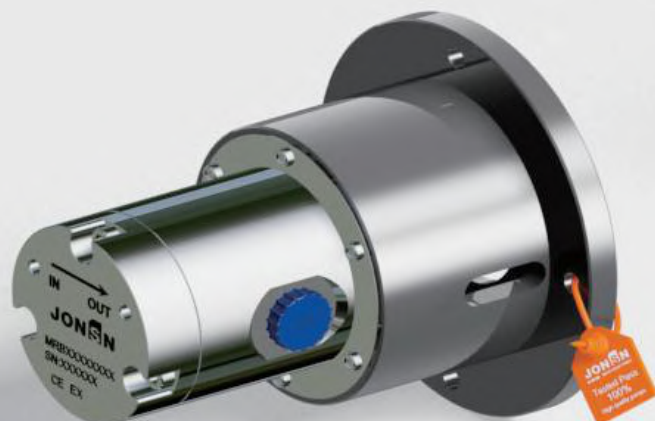
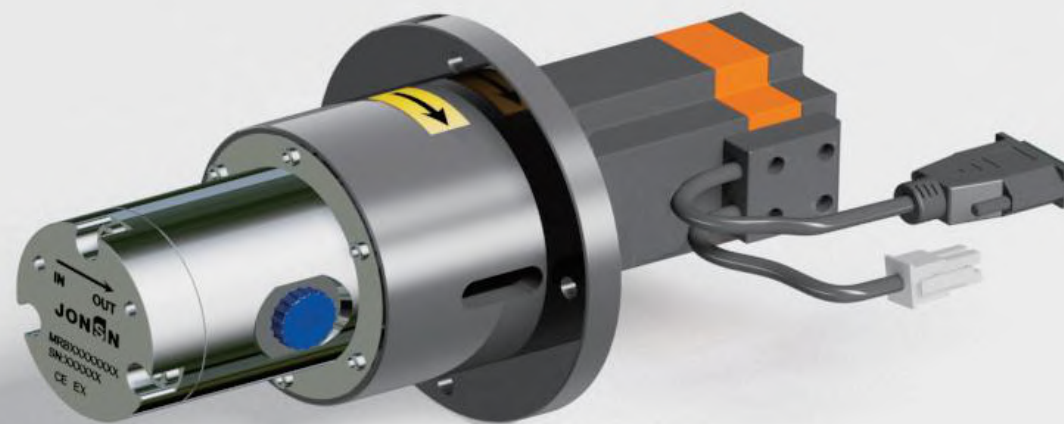
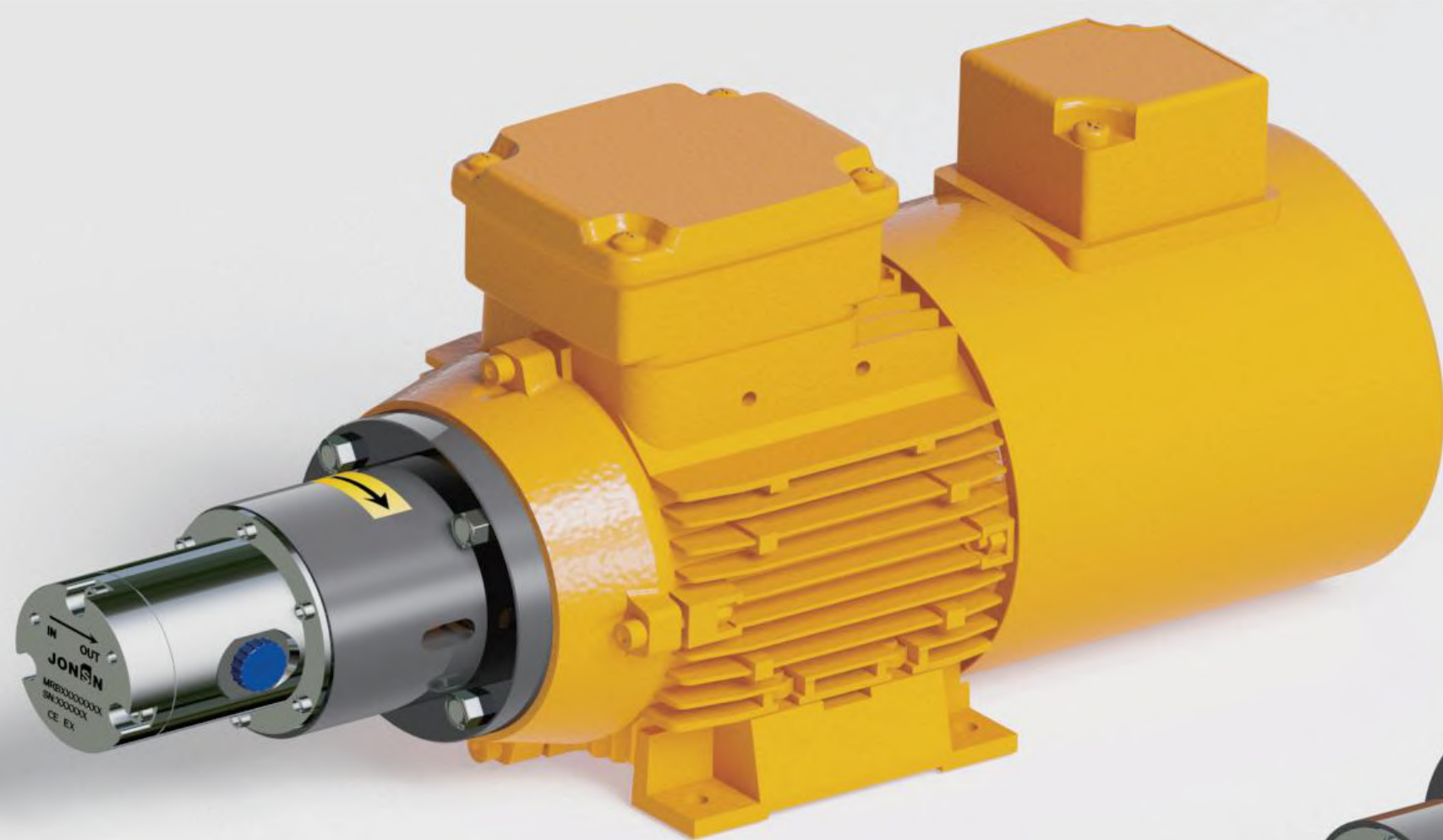


Pump Head MRA 12/13
Measured with oil 100 mPas & 40°C



MIR B

SMALL FLOW TYPE GEAR PUMP

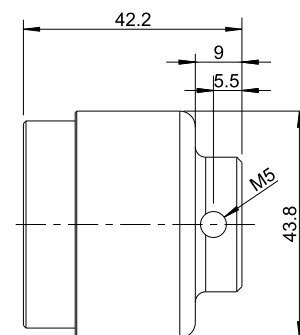
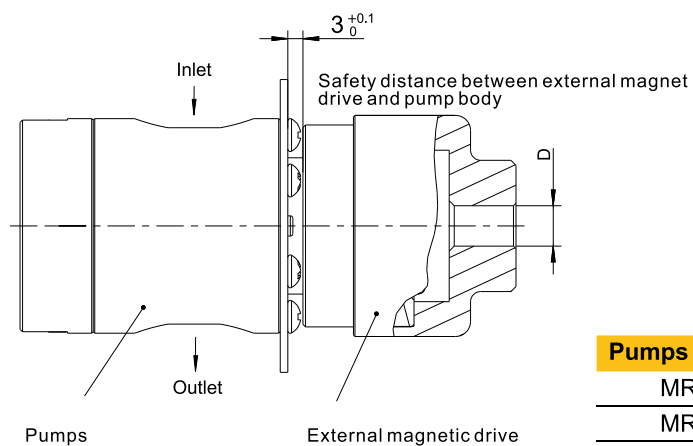
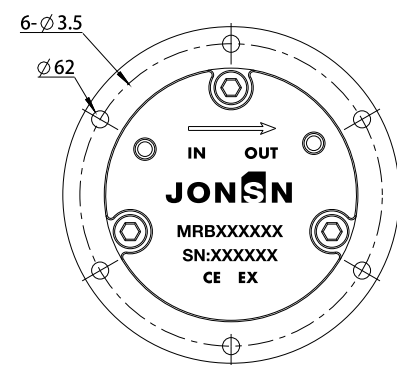
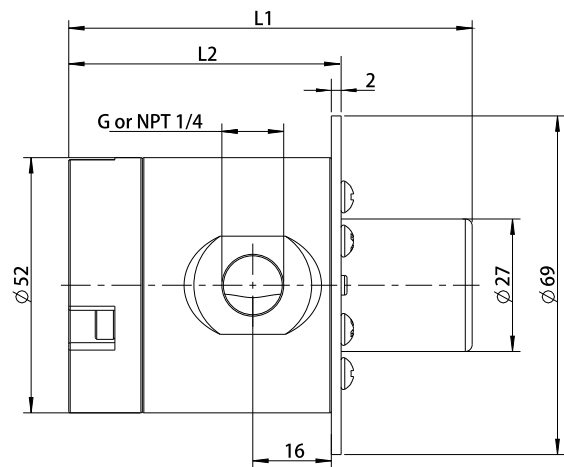


MRB

MICRO GEAR PUMPS

Small flow type

Resolvable working conditions
Flow 400-4800ml/min
Working pressure difference: 0.5-25bar
Viscosity 0.4-3000m.Pas (approximate to water)



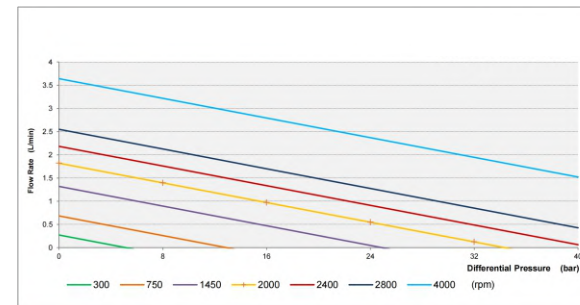
D
5
6
8
11
14
19

Pumps order NO.	L1	L2
MRB 10/16	82.2	55.5
MRB 12/16		
MRB17/16	87.2	60.5
MRB19/16		

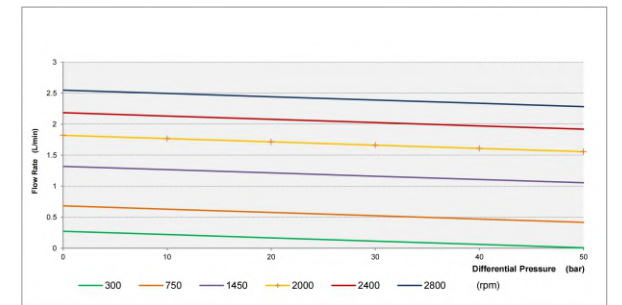
Performance curve

Realize the flow rate adjustable with high linearity by adjusting the motor speed.

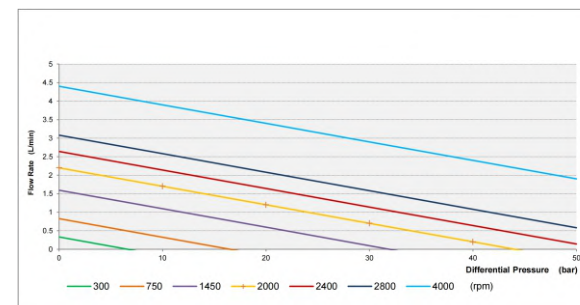
Pump Head MRB 10/16
Measured with water 1 mPas & 40°C



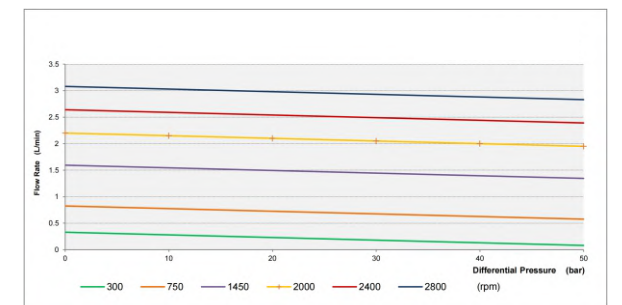
Pump Head MRB 10/16
Measured with oil 100 mPas & 40°C



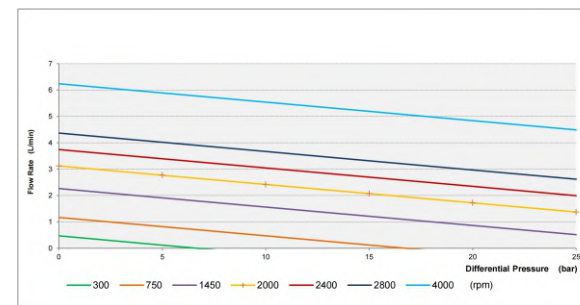
Pump Head MRB 12/16
Measured with water 1 mPas & 40°C



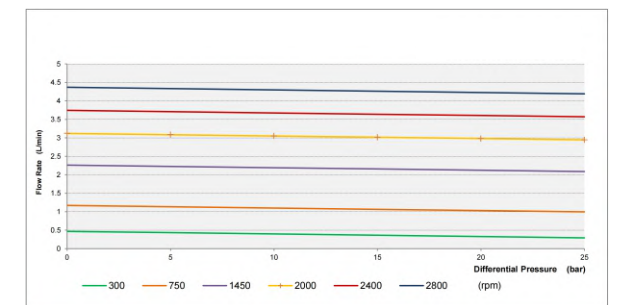
Pump Head MRB 12/16
Measured with oil 100 mPas & 40°C



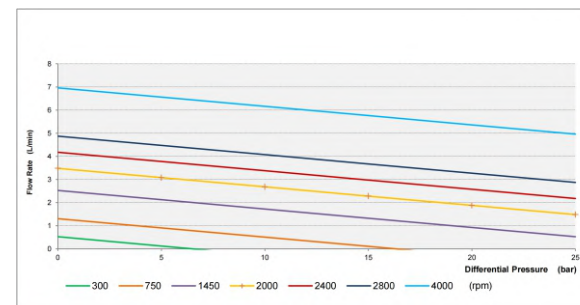
Pump Head MRB 17/16
Measured with water 1 mPas & 40°C



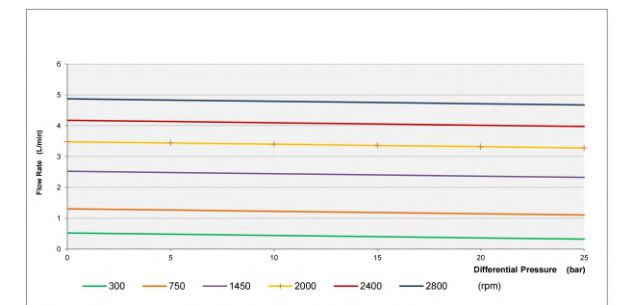
Pump Head MRB 17/16
Measured with oil 100 mPas & 40°C



Pump Head MRB 19/16
Measured with water 1 mPas & 40°C

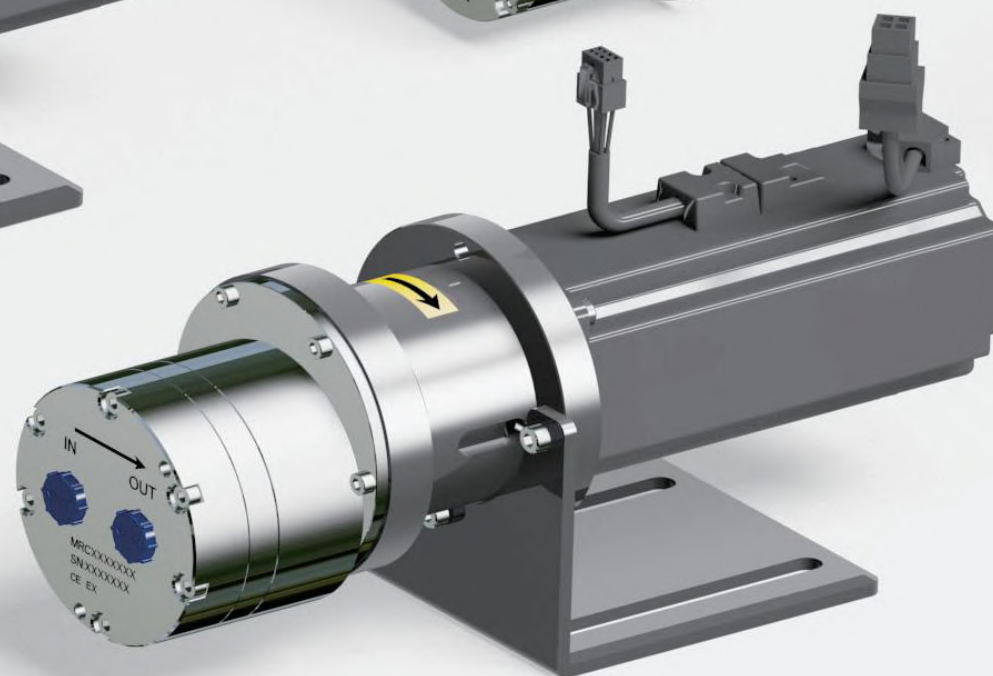
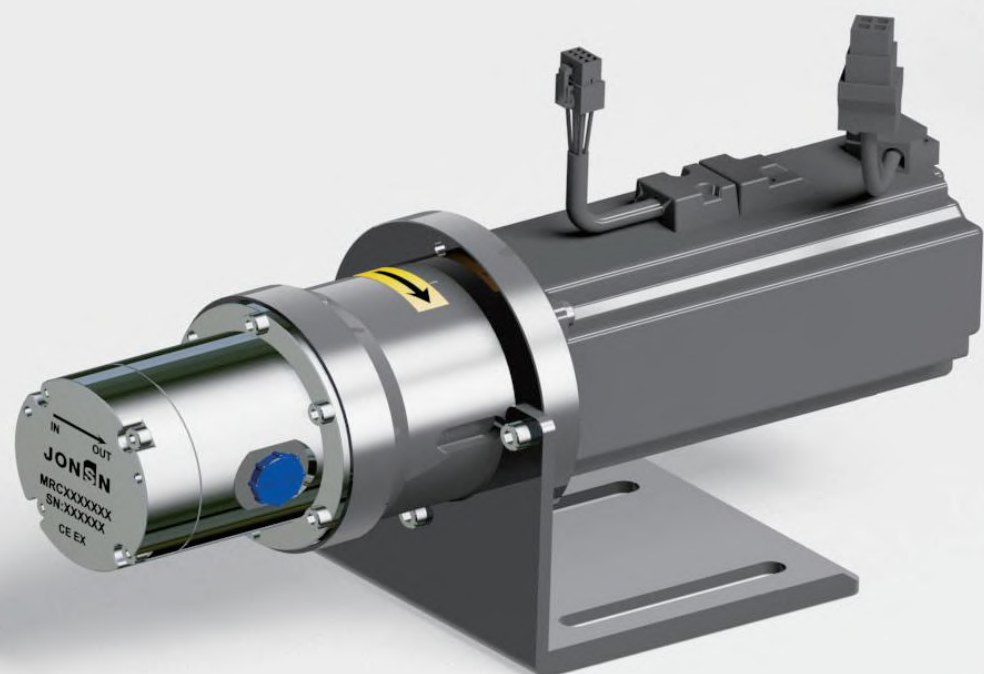
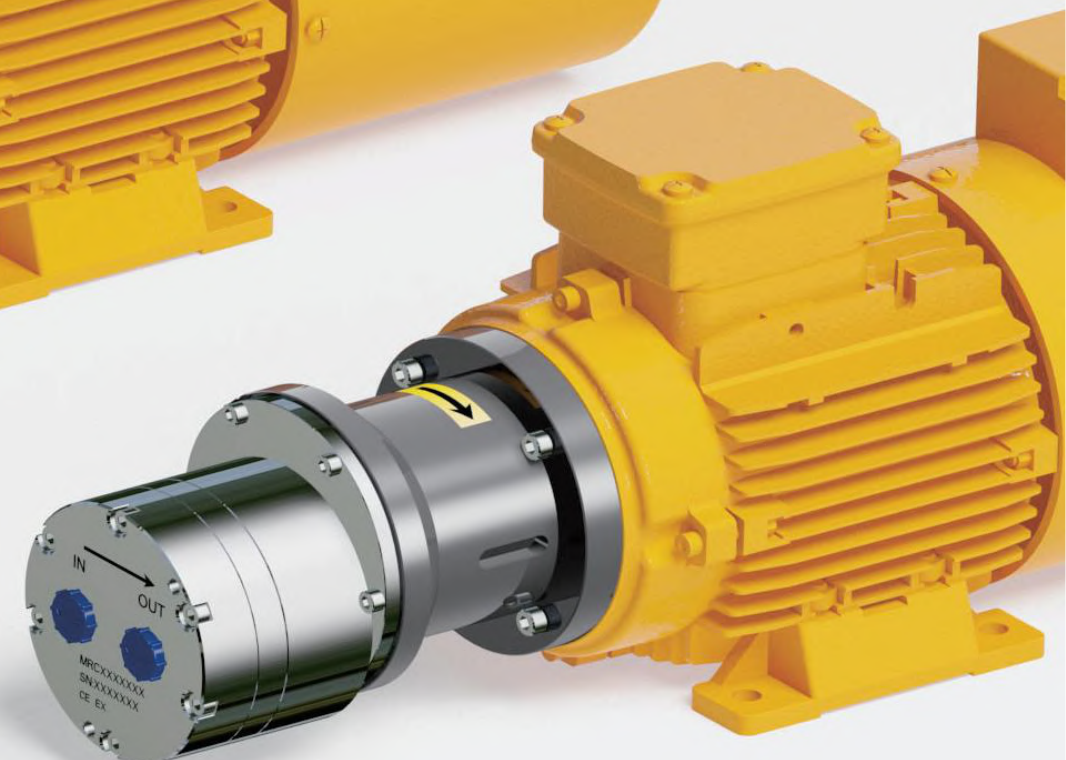
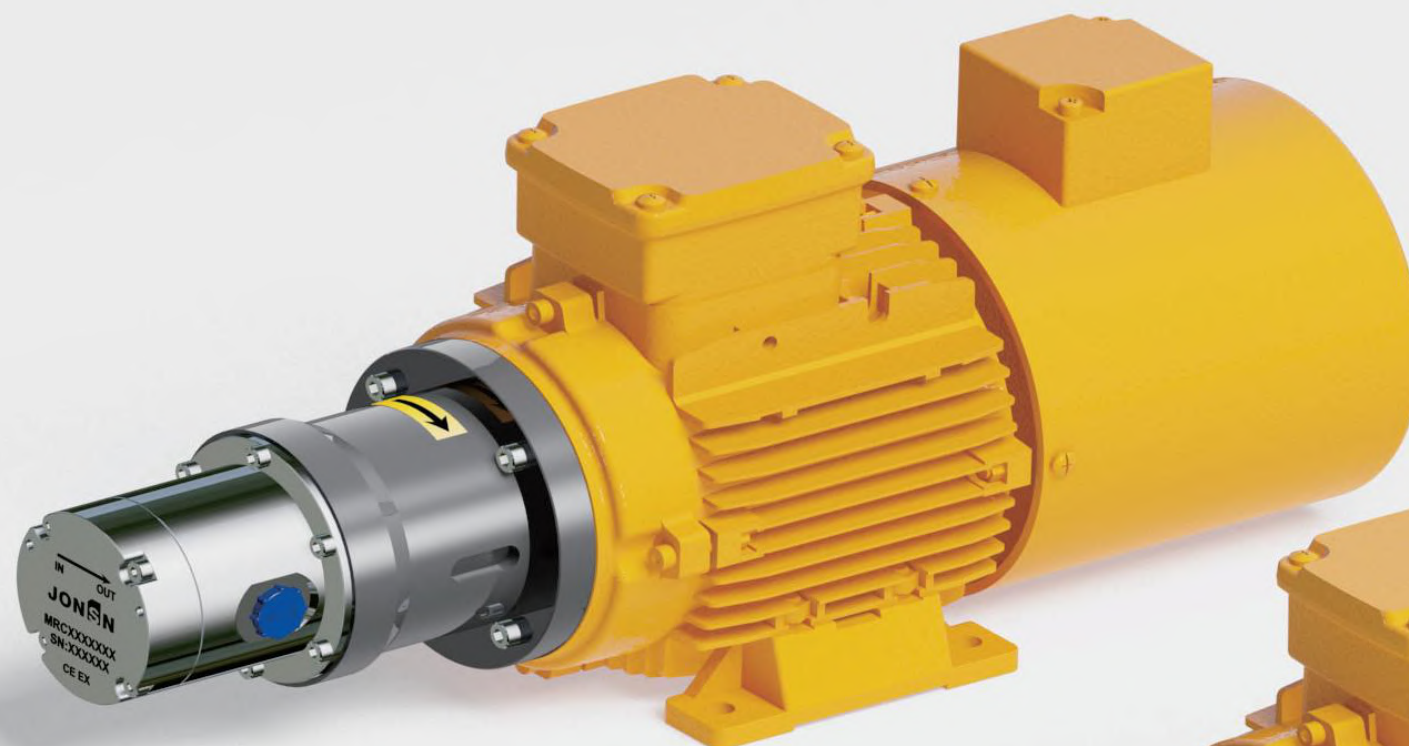


Pump Head MRB 19/16
Measured with oil 100 mPas & 40°C





MEDIUM FLOW TYPE GEAR PUMP

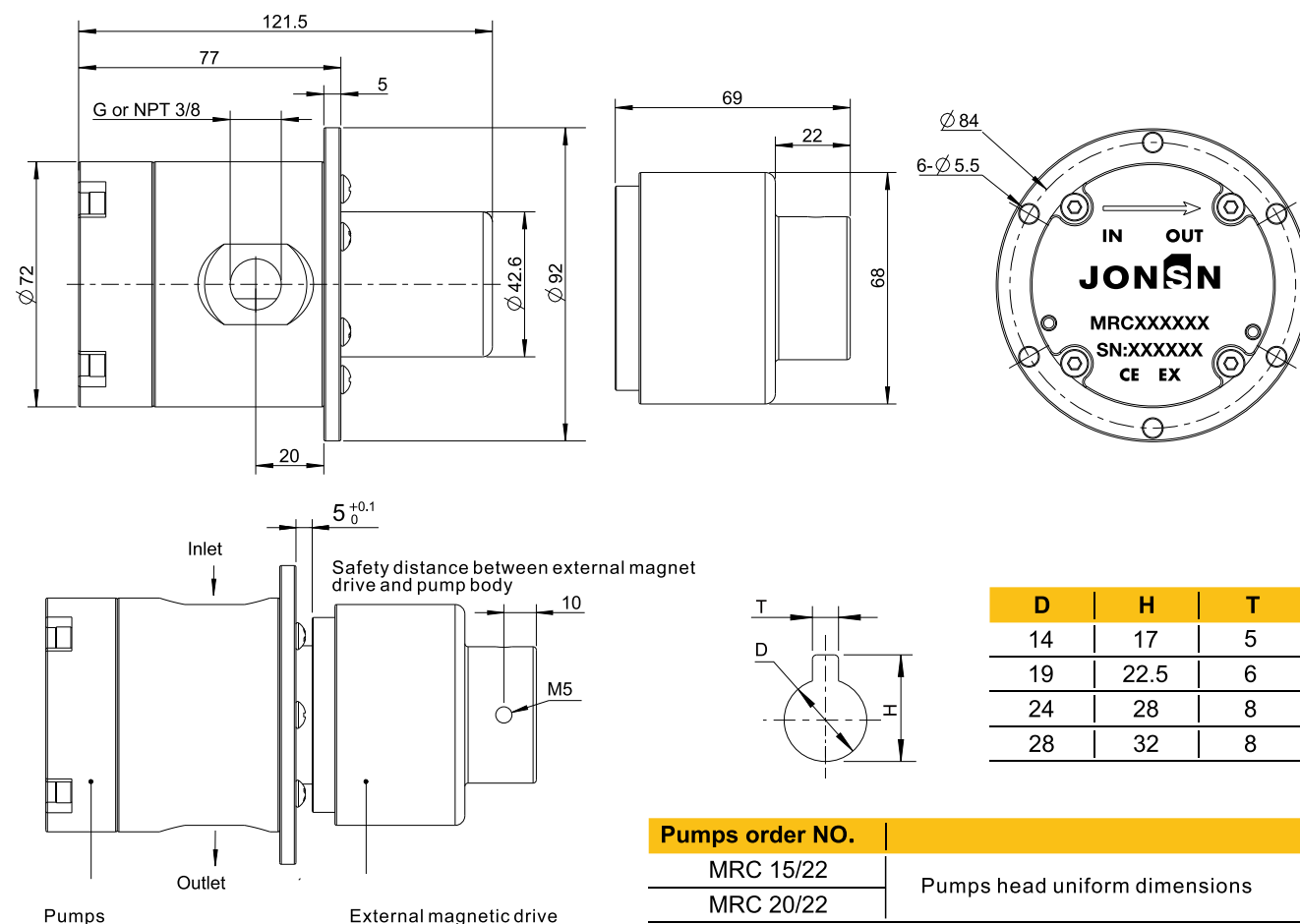
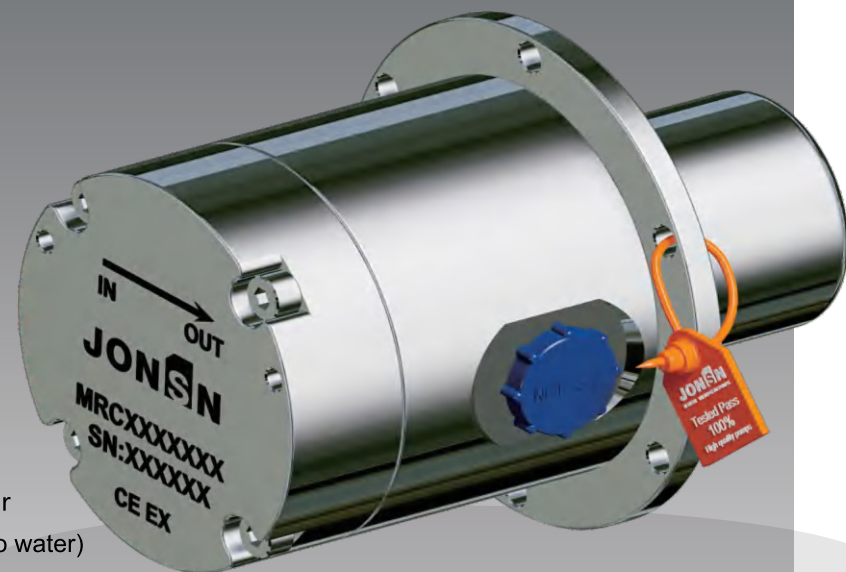


MRC

MICRO GEAR PUMPS

Medium flow type
MRC15/22
MRC20/22

Resolvable working conditions
Flow 0.8-14L/min
Working pressure difference: 0.5-25bar
Viscosity 0.4-3000m.Pas (approximate to water)

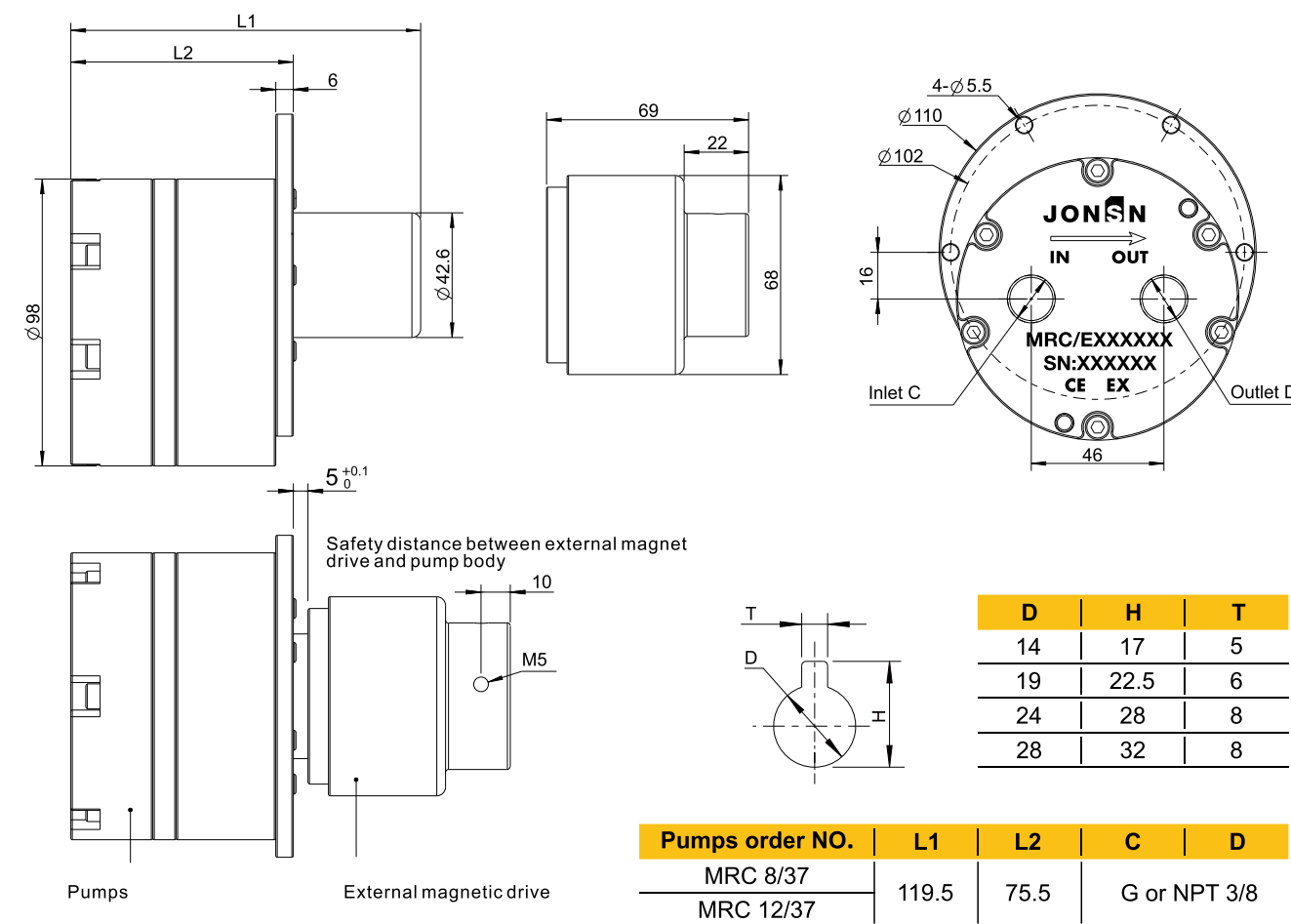


MRC

MICRO GEAR PUMPS

Medium flow type
MRC8/37
MRC12/37

Resolvable working conditions
Flow 0.8L-14L/min
Working pressure difference 0.5-25bar
Viscosity 0.4-3000m.Pas (approximately water)



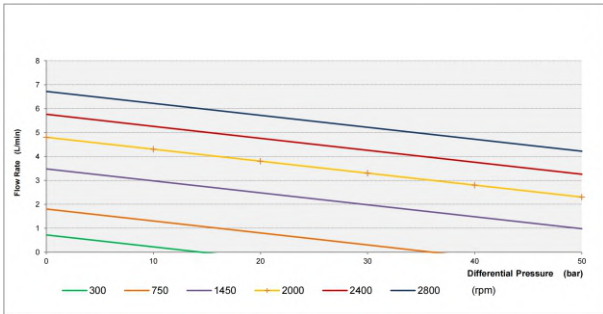
MICRO GEAR PUMPS

MRC15/22
MRC20/22

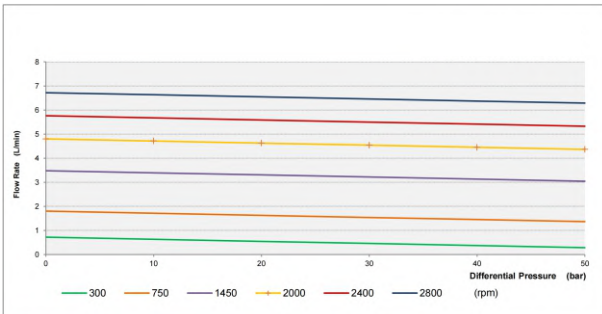


Performance curve

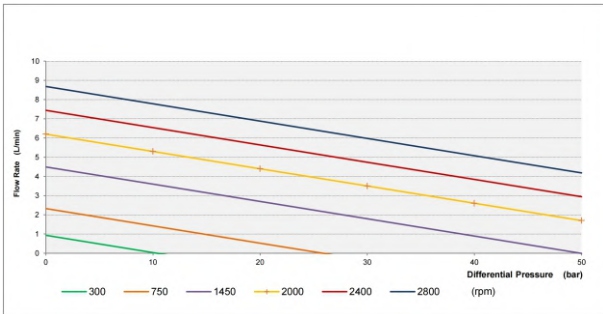
Pump Head MRC 15/22
Measured with water 1 mPas & 40°C



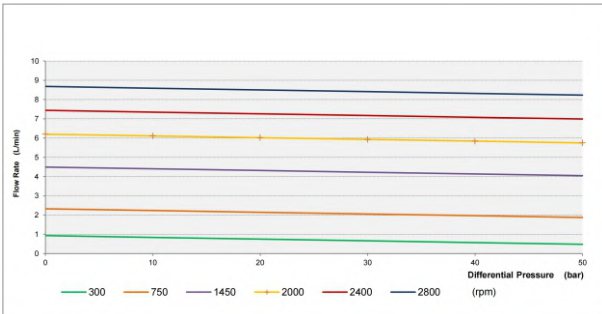
Pump Head MRC 15/22
Measured with oil 100 mPas & 40°C



Pump Head MRC 20/22
Measured with water 1 mPas & 40°C



Pump Head MRC 20/22
Measured with oil 100 mPas & 40°C



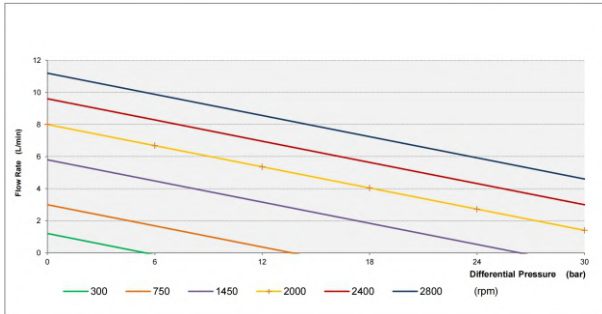
MICRO GEAR PUMPS

MRC8/37
MRC12/37

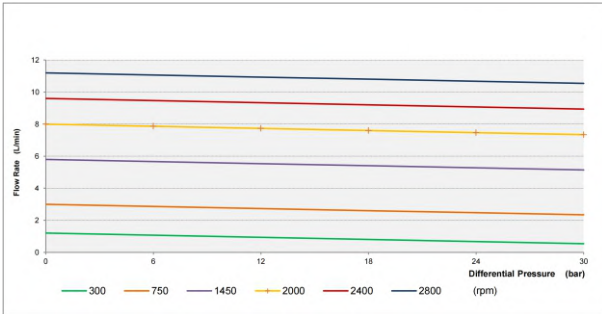


Performance curve

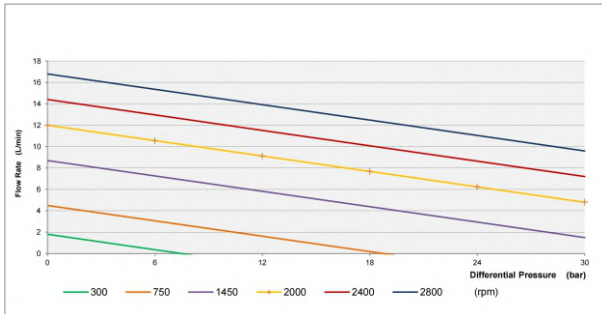
Pump Head MRC 8/37
Measured with water 1 mPas & 40°C



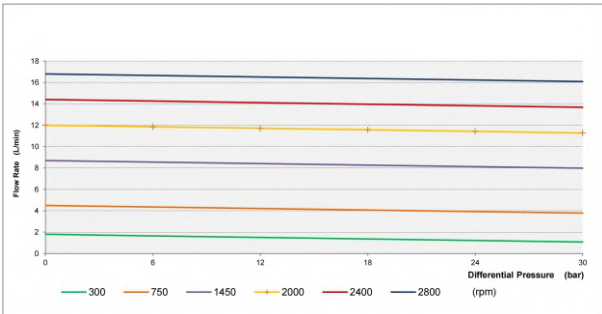
Pump Head MRC 8/37
Measured with oil 100 mPas & 40°C



Pump Head MRC 12/37
Measured with water 1 mPas & 40°C

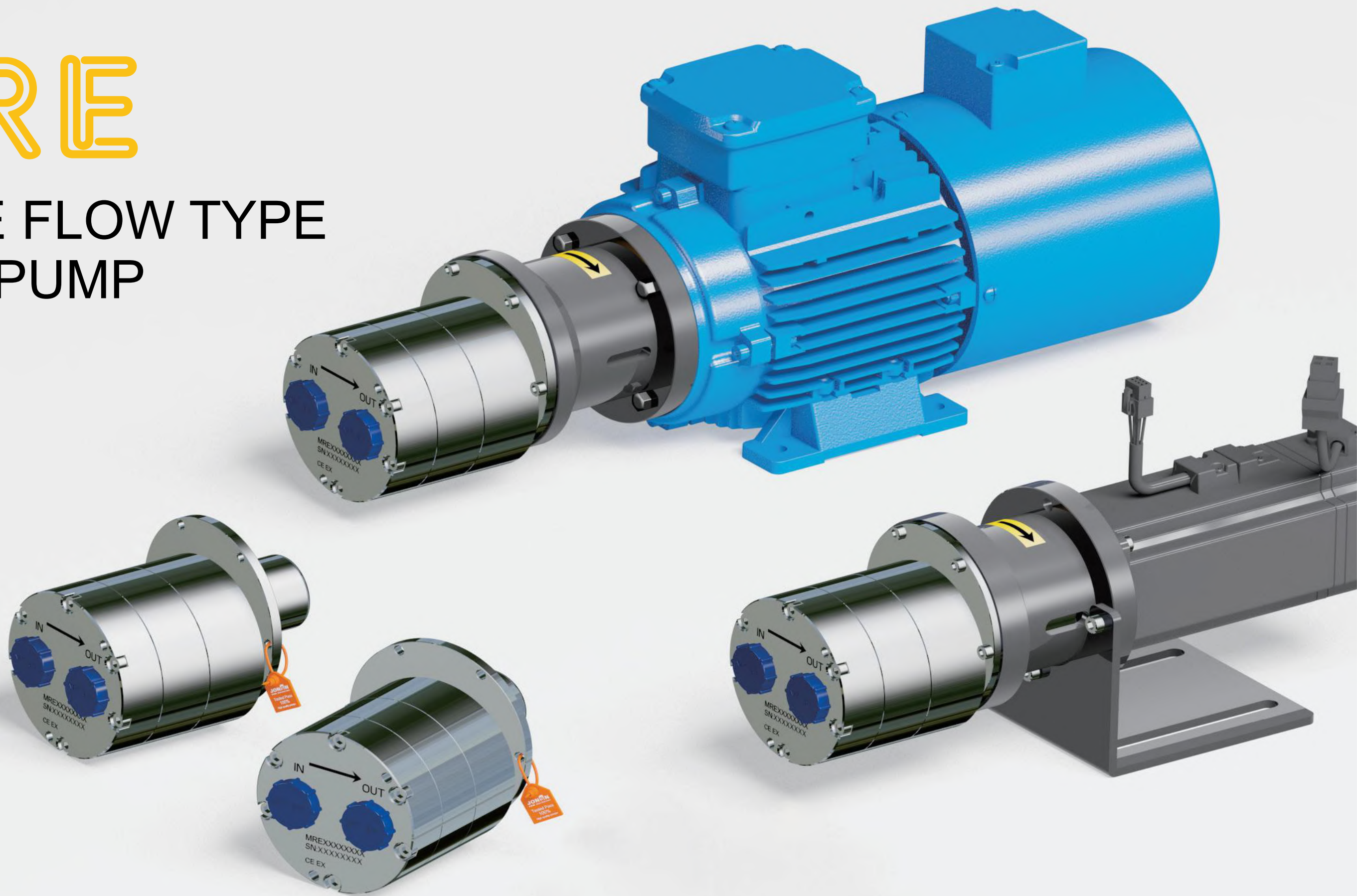


Pump Head MRC 12/37
Measured with oil 100 mPas & 40°C



MIRE

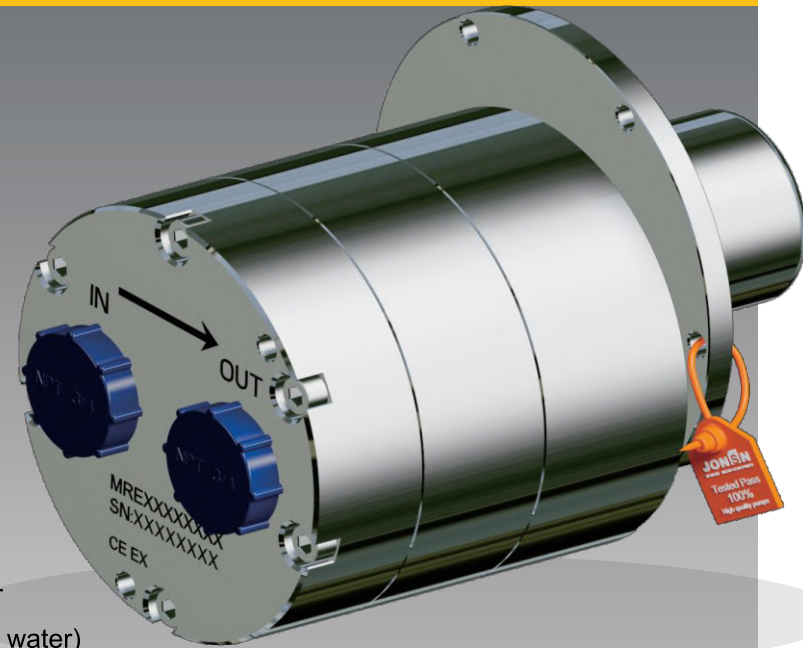
LARGE FLOW TYPE GEAR PUMP



MRE

MICRO GEAR PUMPS

Large flow type

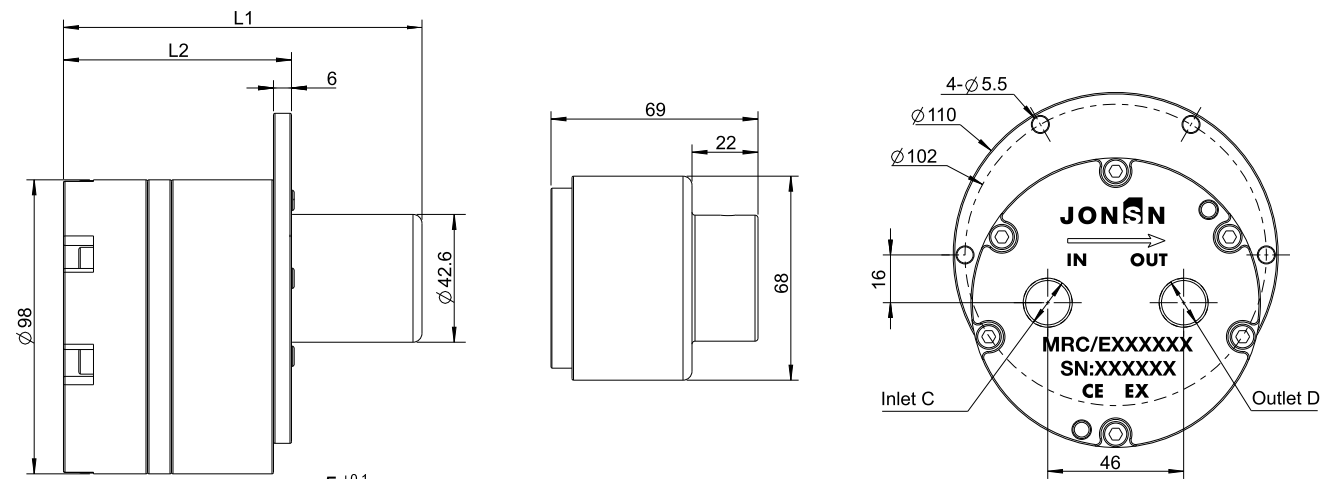


Resolvable working conditions

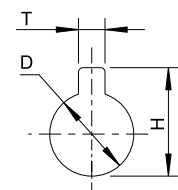
Flow rate 4-48L/min

Working pressure difference: 0.5-25bar

Viscosity 0.4-3000m.Pas (approximate to water)



Safety distance between external magnet drive and pump body

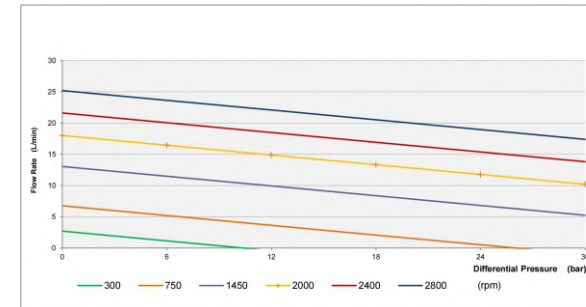


Pumps order NO.	L1	L2	C	D
MRE 18/37	141.5	98.5	G or NPT 3/4	
MRE 24/37				
MRE 34/37				

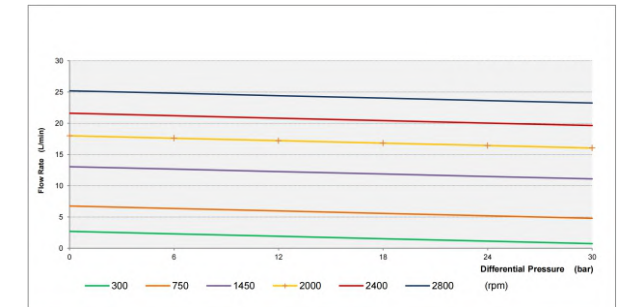
Performance curve

Realize the flow rate adjustable with high linearity by adjusting the motor speed.

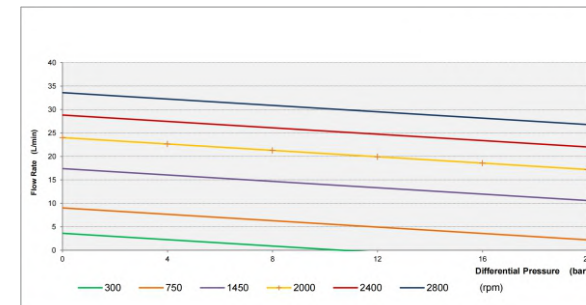
Pump Head MRE 18/37
Measured with water 1 mPas & 40°C



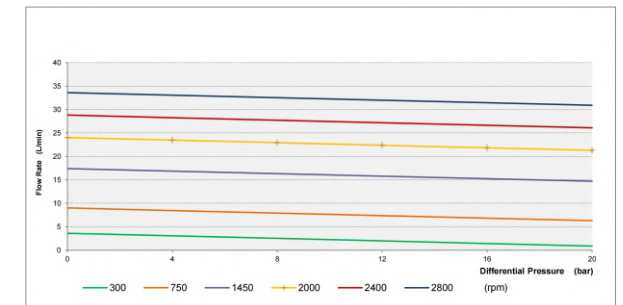
Pump Head MRE 18/37
Measured with oil 100 mPas & 40°C



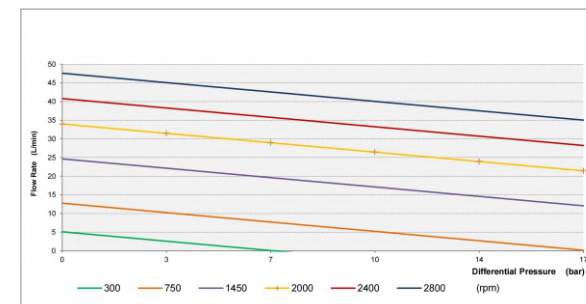
Pump Head MRE 24/37
Measured with water 1 mPas & 40°C



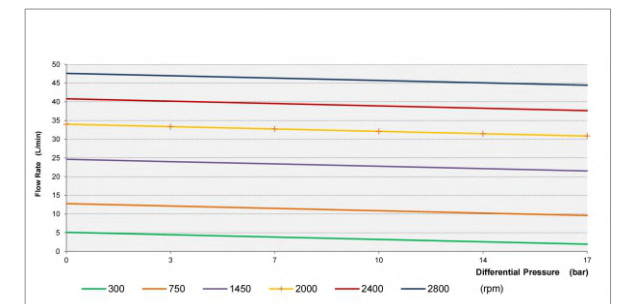
Pump Head MRE 24/37
Measured with oil 100 mPas & 40°C



Pump Head MRE 34/37
Measured with water 1 mPas & 40°C

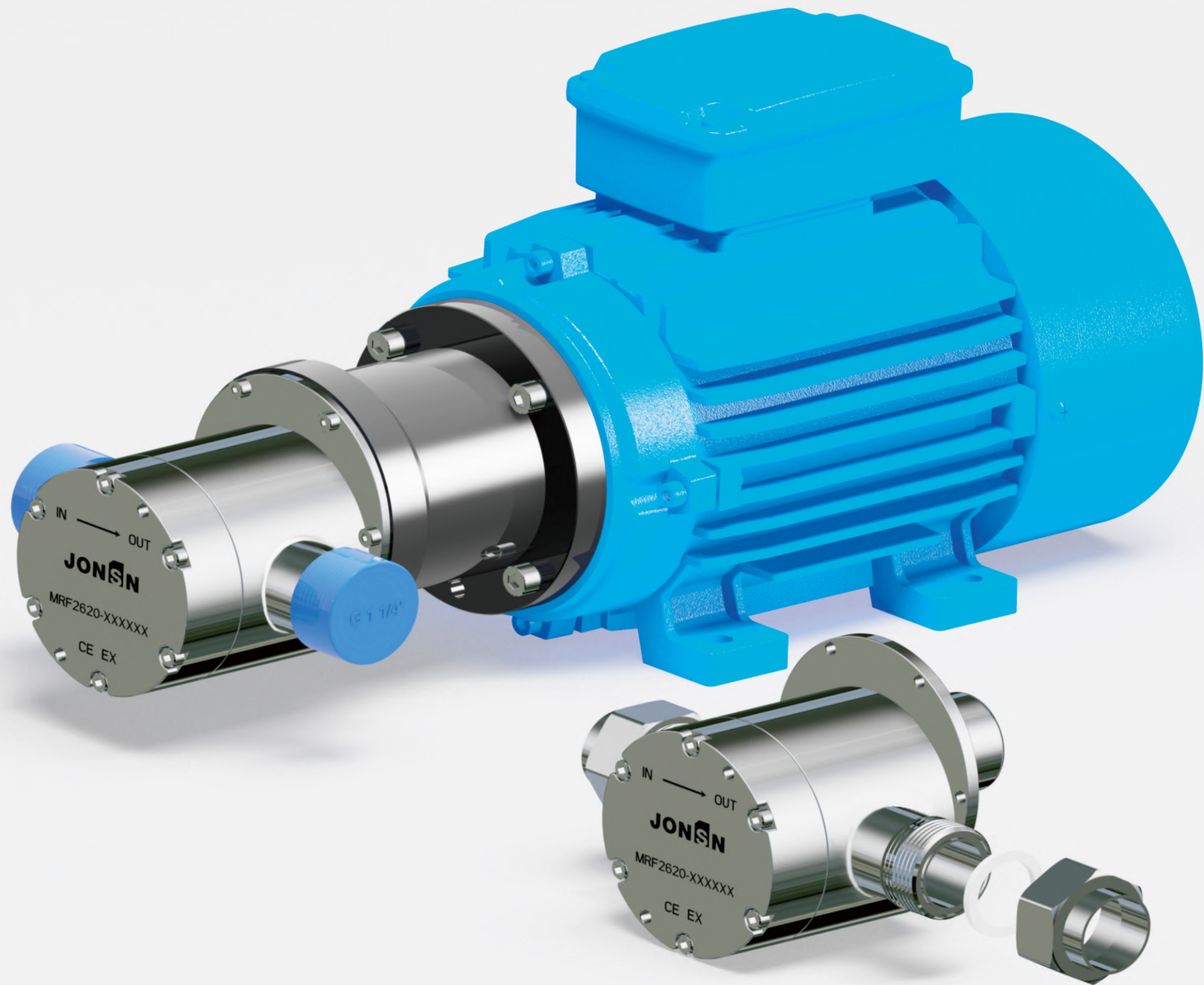


Pump Head MRE 34/37
Measured with oil 100 mPas & 40°C



MRF

LARGE FLOW TYPE GEAR PUMP



MRF

MICRO GEAR PUMPS

大流量型
Large flow type

Resolvable working conditions

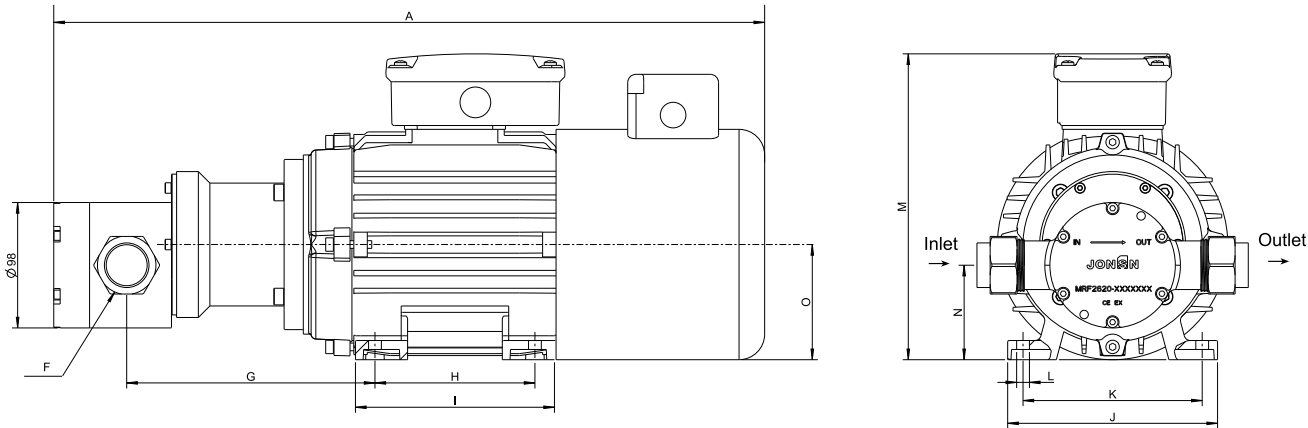
Flow rate 8L-64L/min

Working pressure difference 0.5-14.5bar

Viscosity 0.4-3000m.Pas (approximately water)

MRF

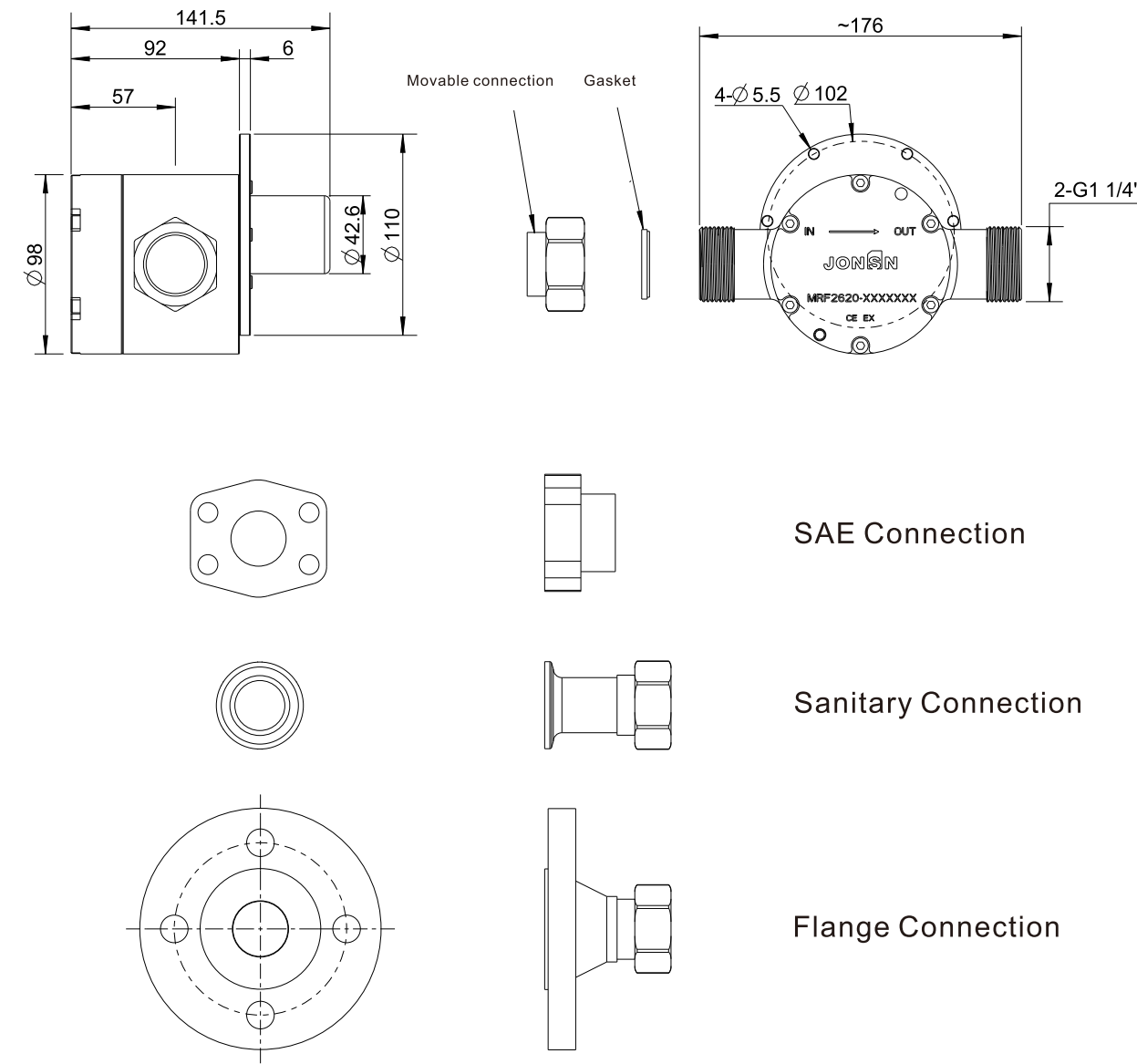
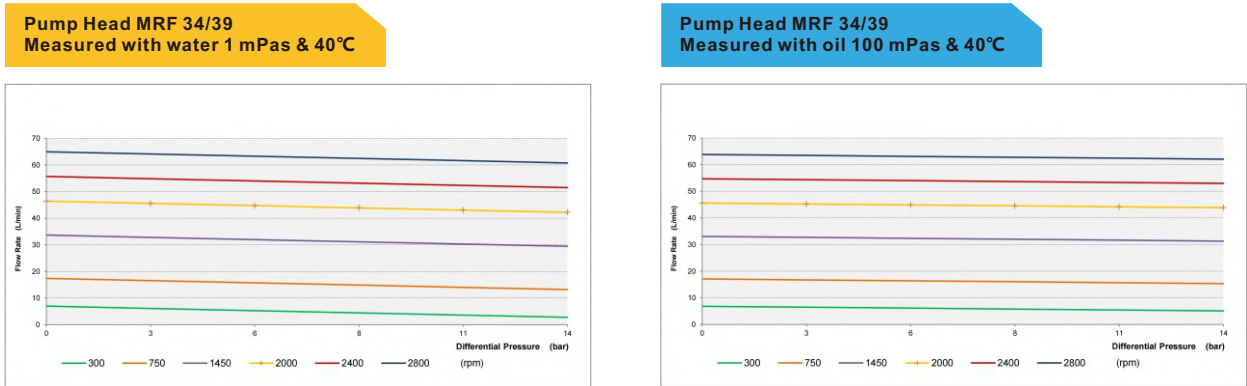
IEC Motor 2.2-3Kw 90L 100L B34



Pumps order NO.	A	F	G	H	I	J	K	L	M	N	O	Q
MRF34/39-90L	~556	2-G11/4"	194	125	156	160	140	4-Φ10	~240	74	90	~212
MRF34/39-100L	~605	2-G11/4"	211	140	173	188	160	4-Φ12	~275	83.8	100	~212

Performance curve

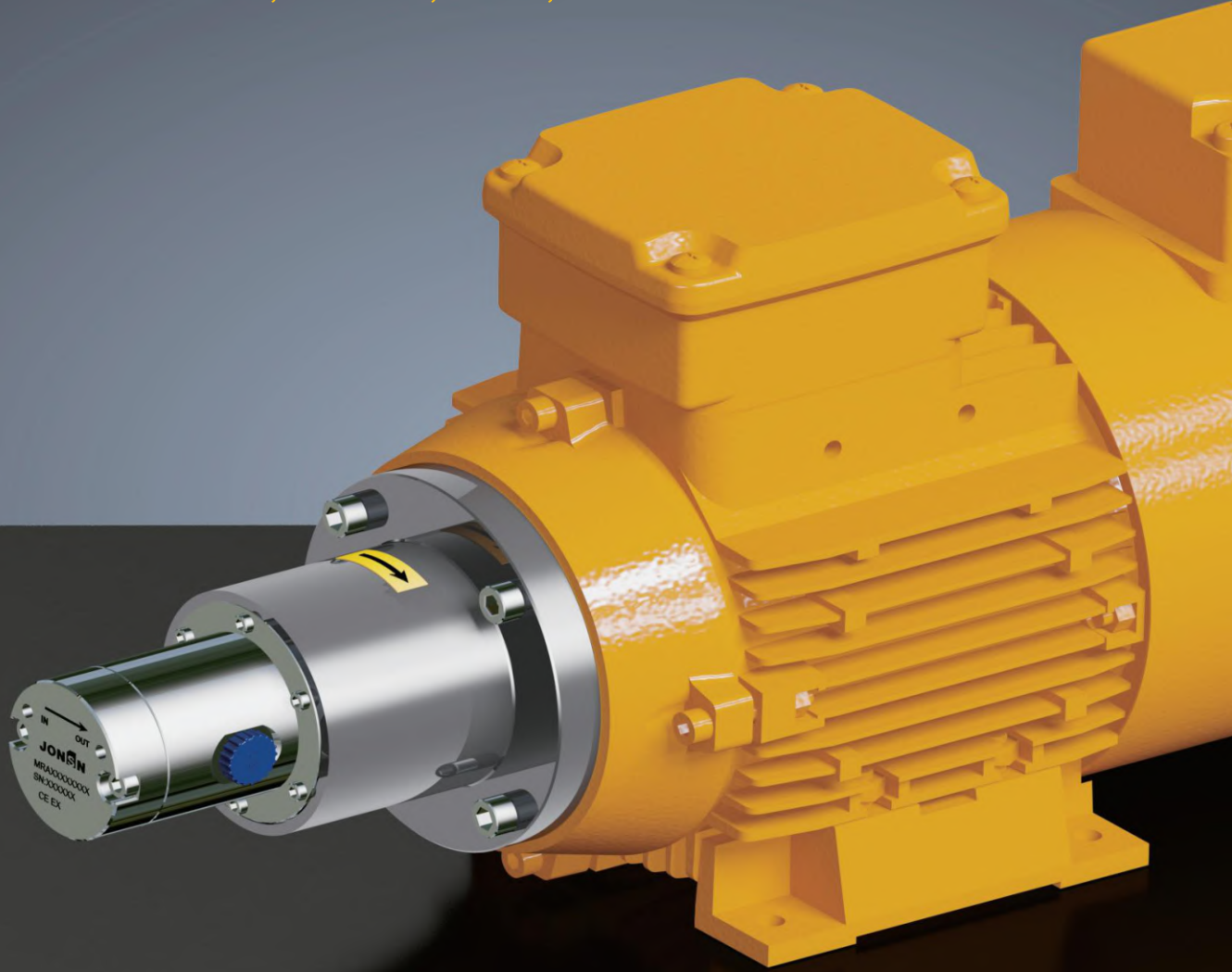
Realize the flow rate adjustable with high linearity by adjusting the motor speed.



MRA-MRB IEC

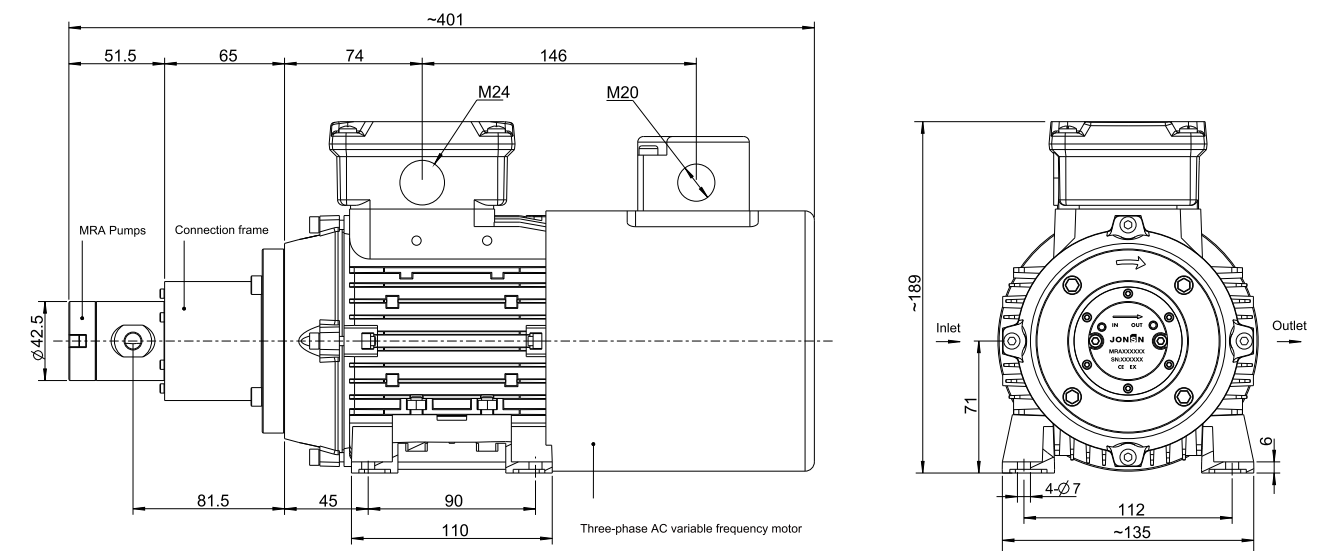
MRA / MRB & IEC Motor

Standard : ABB Variable frequency motor
Option Brand: NANYANG, WANNAN, HUXIN, HEND

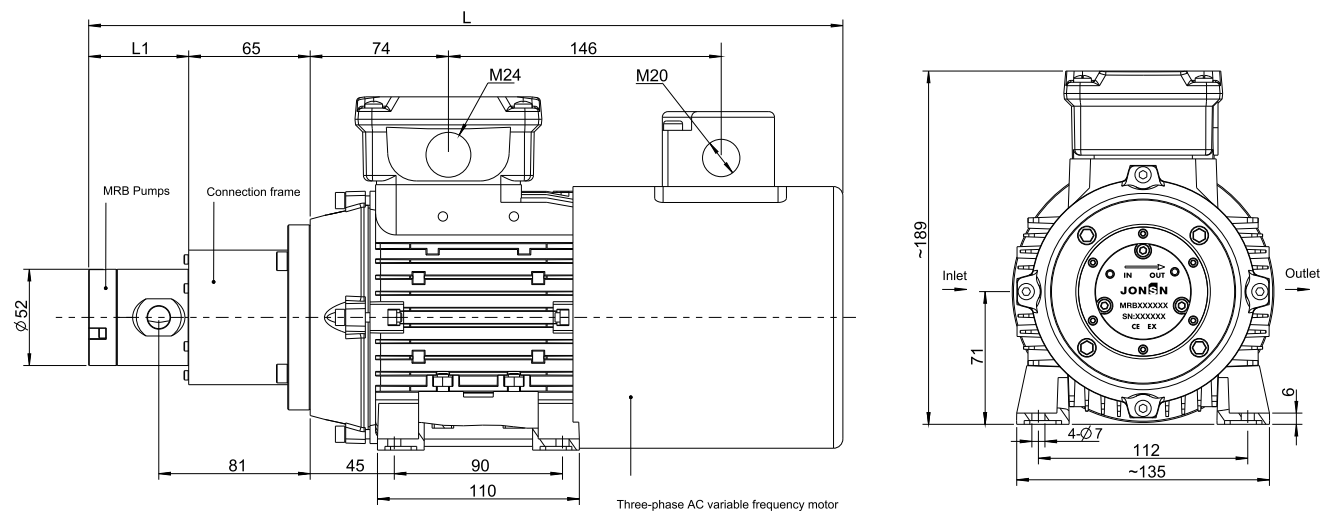


High-quality pumps, of course, need to be matched with an efficient and stable motor to provide stable power.
As a long term supporting partner of ABB, JONSN has been in depth cooperation with ABB for more than 10 years.

MRA IEC Motor 0.37Kw 71M B34

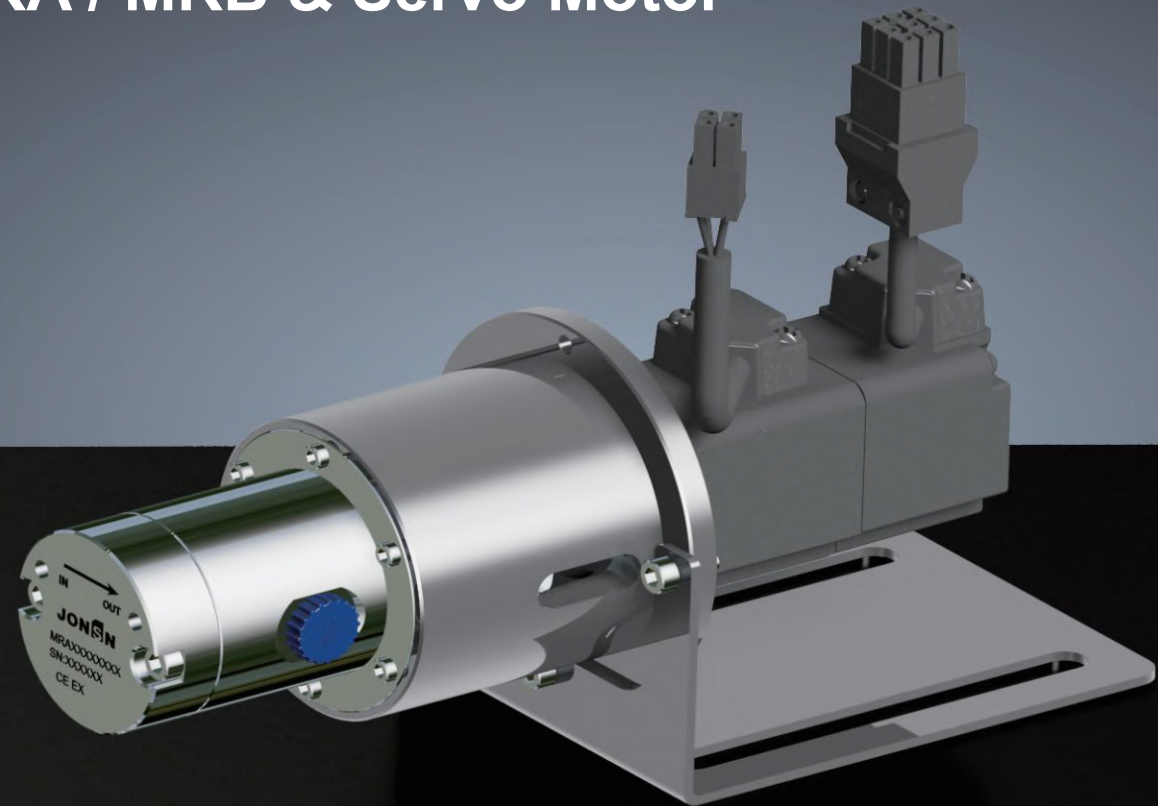


MRB IEC Motor 0.37Kw 71M B34



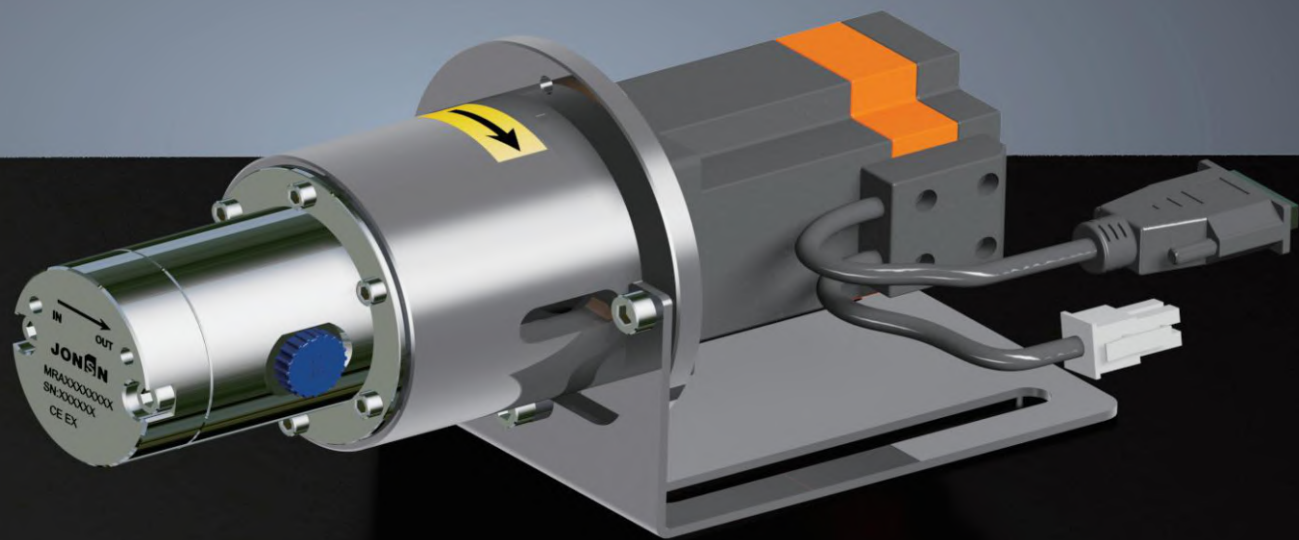
Pumps order NO.	L	L1
MRB 10/16	~ 404	53.5
MRB 12/16	~ 404	53.5
MRB17/16	~ 409	58.5
MRB19/16	~ 409	58.5

MRA / MRB & Servo Motor

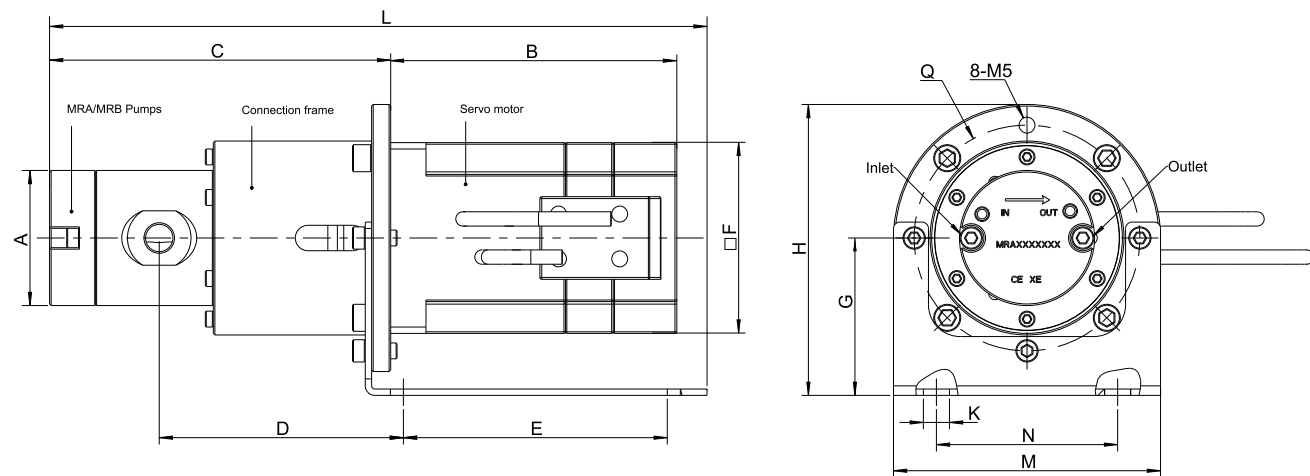


Standard brand: DELTA
Option brand: Siemens, Panasonic, Mitsubishi, Yaskawa
Other customer offered motor can be installed by Jonsn.

MRA / MRB & Stepper Motor

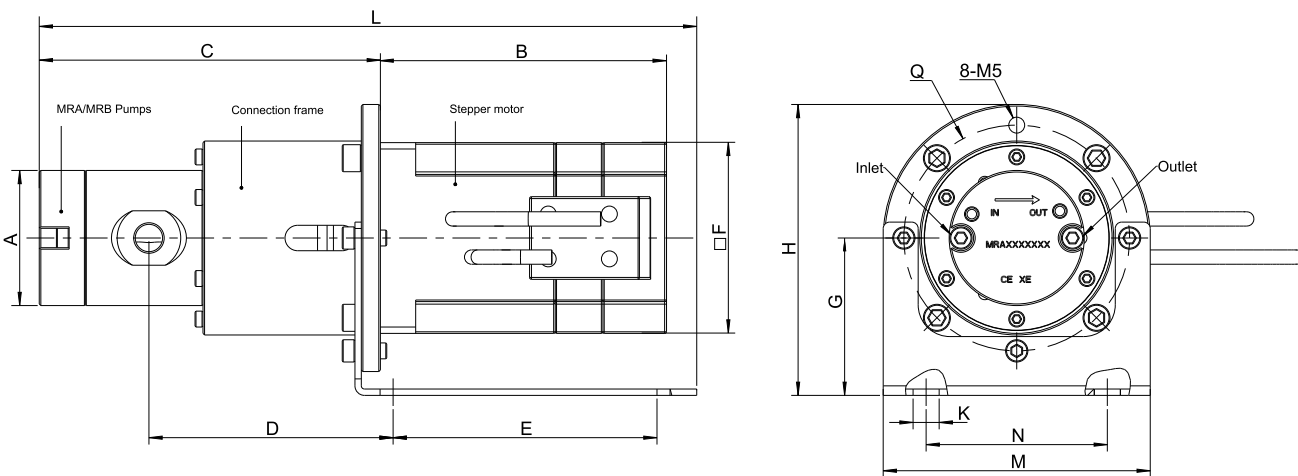


Standard: JONSN customize model
Option: 42, 57, 60, 86 base



MRA / MRB & Servo motor 220V 100W-400W 0-3000rpm

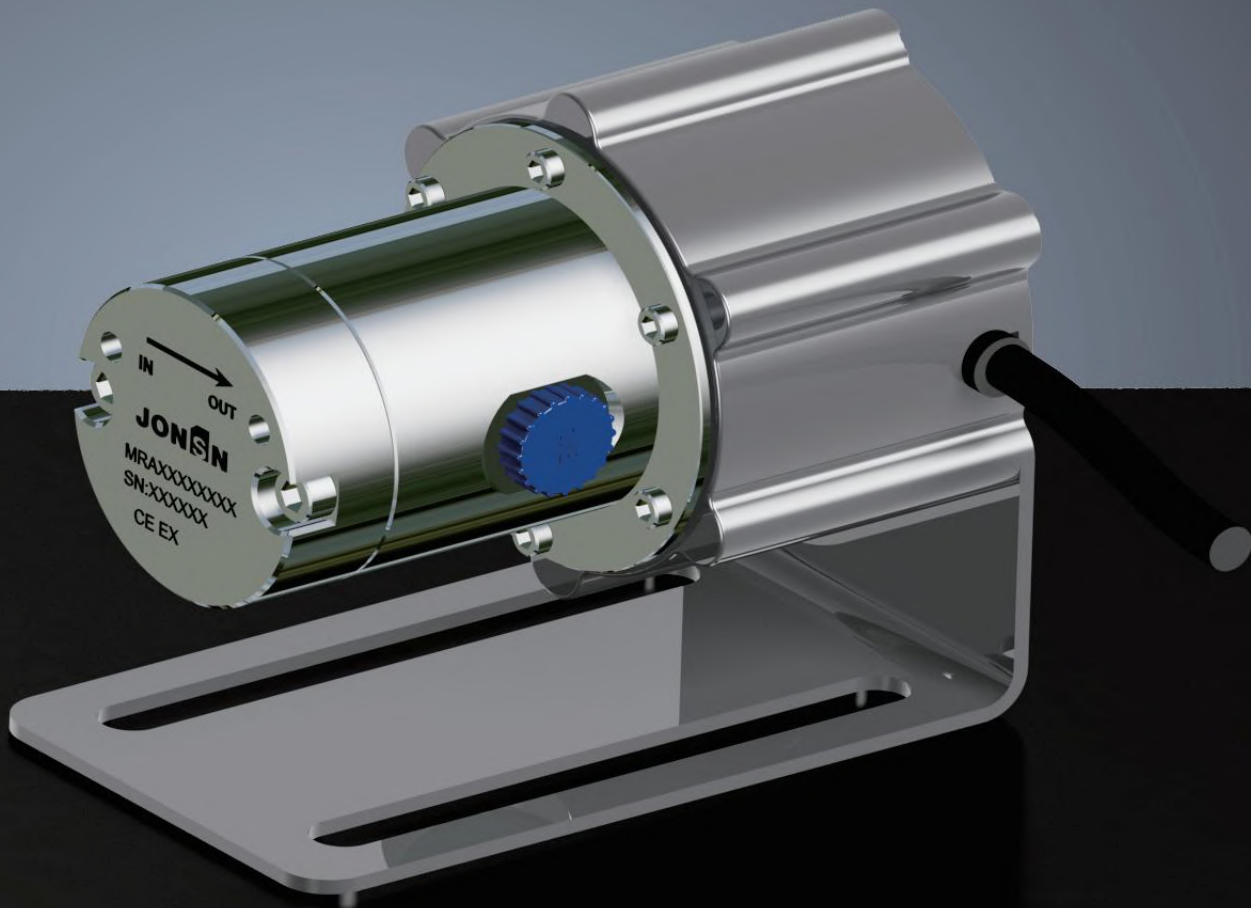
Pumps order NO.	A	B	C	D	E	F	G	H	K	L	M	N	Q
MRA & 100W	42.5	100	111	81	80	40	49.5	~92	8	210	84	57	71
MRA & 200W	42.5	105	117	86	80	60	49.5	~92	8	209	84	57	71
MRB10/16 & 200W	52	105	123	80	80	60	72	~124	8	207	105	80	90
MRB12/16 & 200W	52	105	123	80	80	60	72	~124	8	207	105	80	90
MRB17/16 & 200W	52	105	128	80	80	60	72	~124	8	212	105	80	90
MRB19/16 & 400W	52	130	128	80	80	60	72	~124	8	237	105	80	90



MRA / MRB & Stepper motor 24V 2N.m 0-1500rpm

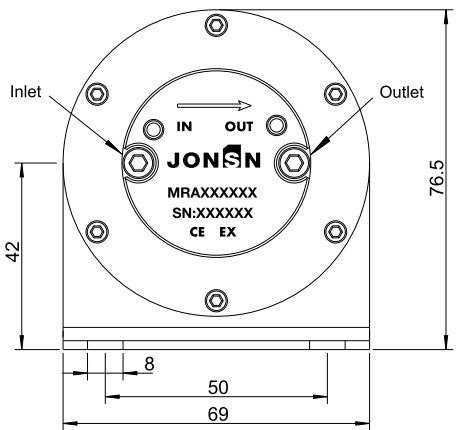
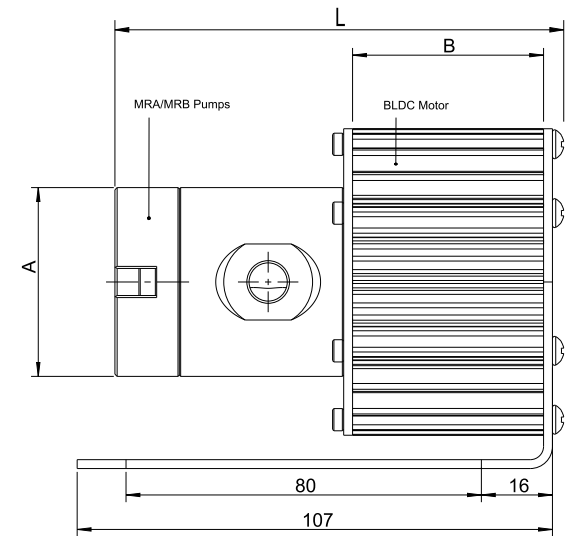
Pumps order NO.	A	B	C	D	E	F	G	H	K	L	M	N	Q
MRA & □ 60	42.5	90	106	77	80	60	49.5	~92	8	207	84	57	71
MRB10/16 & □ 60	52	90	108.5	70	80	60	72	~124	8	208.5	105	80	90
MRB12/16 & □ 60	52	90	108.5	70	80	60	72	~124	8	208.5	105	80	90
MRB17/16 & □ 60	52	90	113.5	70	80	60	72	~124	8	213.5	105	80	90
MRB19/16 & □ 60	52	90	113.5	70	80	60	72	~124	8	213.5	105	80	90

MRA / MRB & BLDC Motor



Standard: JONSN customize model
Option: 42, 57, 60, 86, 110 base

BLDC Motor MRA/MRB

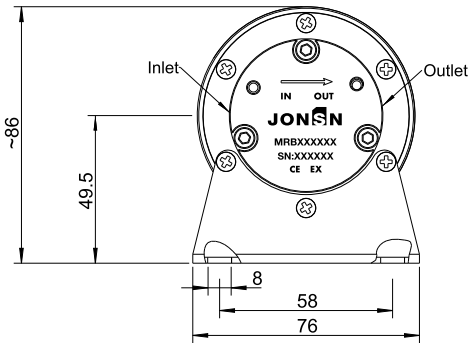
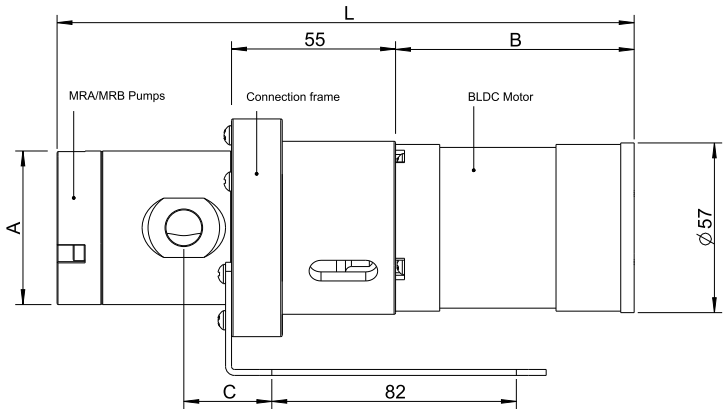


MRA / MRB & BLDC 12V / 24V 40W/70W 150-4000rpm

Pumps order NO.		A	B	L
MRA		42.5	42	102
MRB 10/16	MRB12/16	52	42	104
MRB 17/16	MRB19/16	52	42	109

MRA / MRB & BLDC 12V / 24V 100W 150-4000rpm

Pumps order NO.		A	B	L
MRA		42.5	49	107
MRB 10/16	MRB12/16	52	49	111
MRB 17/16	MRB19/16	52	49	116



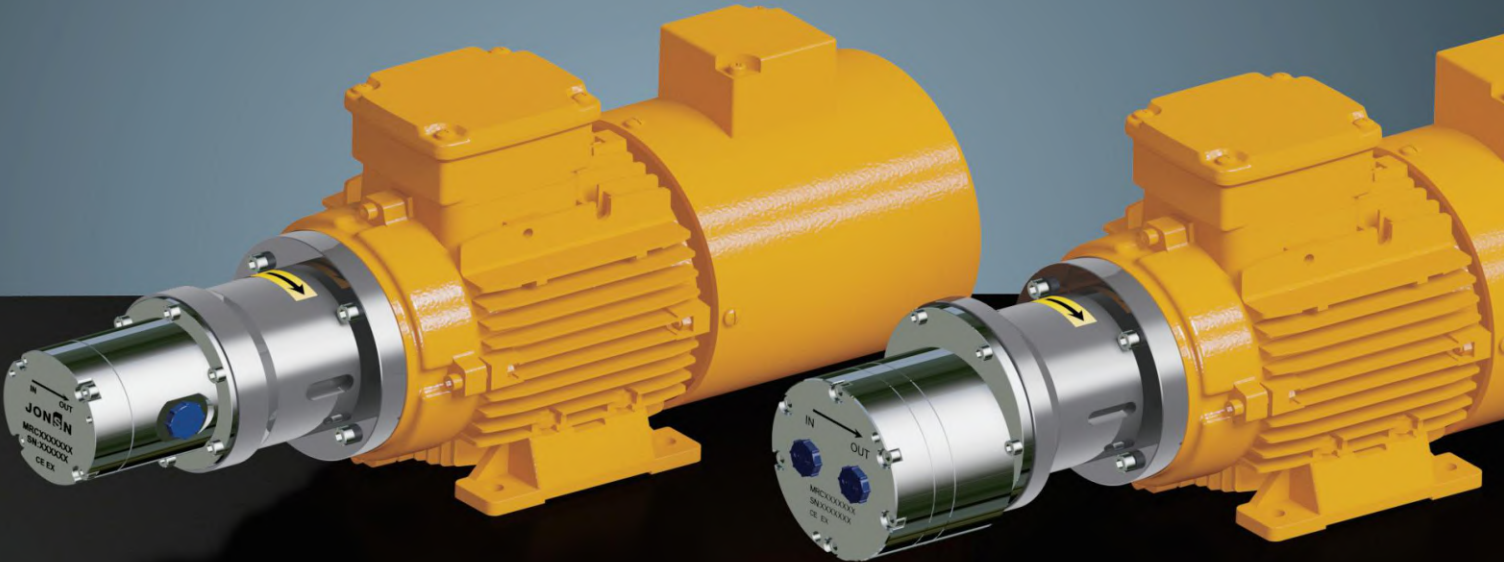
MRA / MRB & BLDC 57 24V 120W 150-3000rpm

Order NO.		A	B	C	L
MRA		42.5	118	30.5	~225
MRB 10/16	MRB12/16	52	118	29.5	~227
MRB 17/16	MRB19/16	55	118	29.5	~232

MRA / MRB & BLDC 24V 150W 150-3000rpm

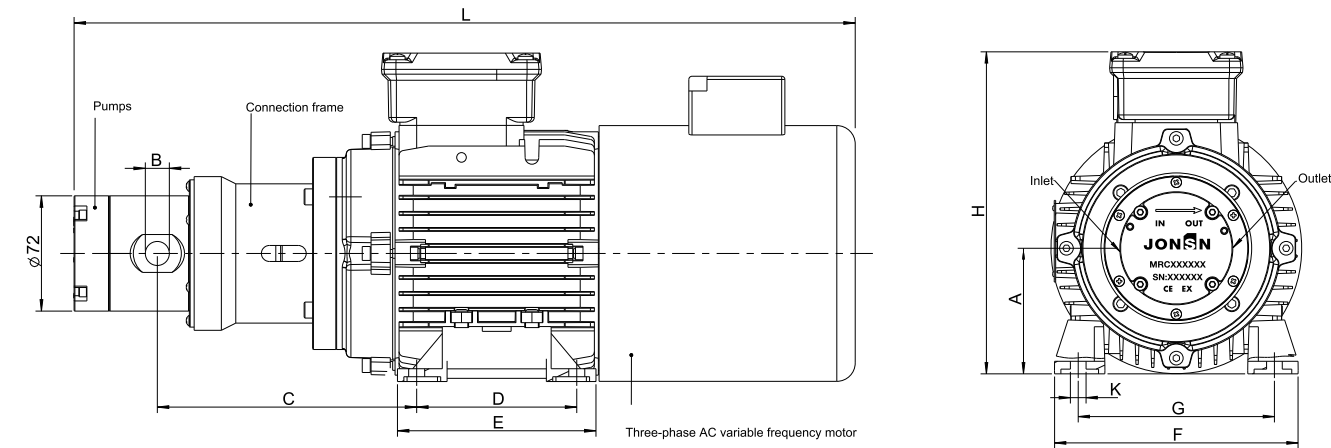
Order NO.		A	B	C	L
MRA		42.5	136	30.5	~243
MRB 10/16	MRB12/16	52	136	29.5	~265
MRB 17/16	MRB19/16	55	136	29.5	~250

MRC / MRE & IEC Motor



Standard : ABB Variable frequency motor
Option Brand: NANYANG, WANNAN, HUXIN, HEND

IEC Motor MRC15 / 22 MRC20 / 22



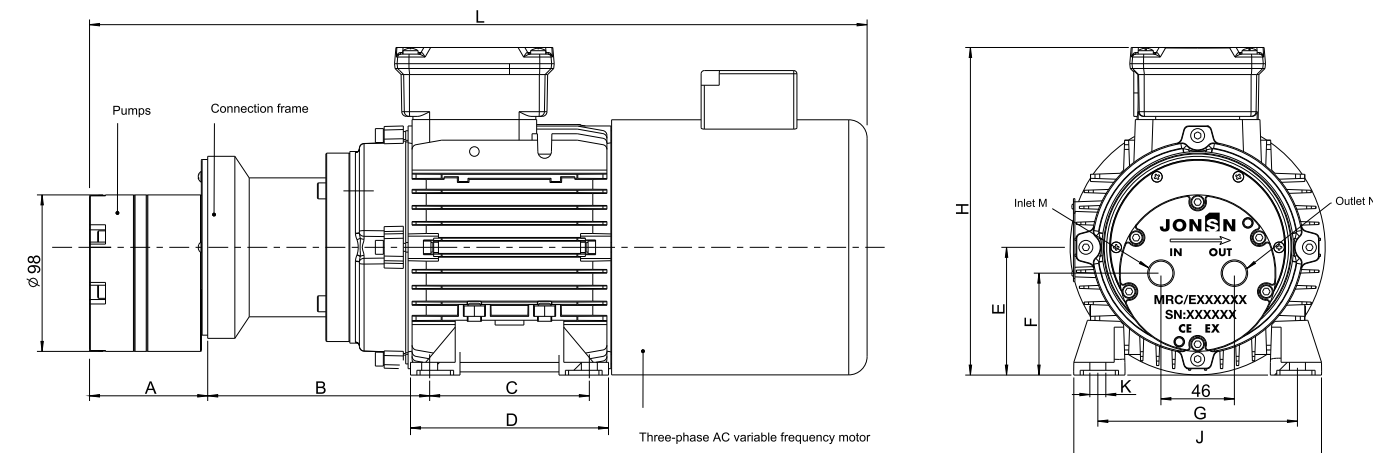
Power & 0.75-1.1Kw 2P 80M B34

Pumps order NO.		A	B	C	D	E	F	G	H	L
MRC 15/22	MRC 20/22	80	G or NPT 3/8	162	100	135	~160	125	~205	~488

Power & 1.5Kw 2P 90L B34

Order NO.		A	B	C	D	E	F	G	H	L
MRC 15/22	MRC 20/22	90	G or NPT 3/8	178	125	165	~175	140	~235	~535

IEC Motor MRC 8/37 MRC12/37 MRE 18/37 MRE 24/37 MRE 34/37



Power & 0.75-1.1Kw 2P 80M B34

Pumps order NO.		A	B	C	D	E	F	G	H	J	K	L	M	N
MRC 15/22	MRC 20/22	74	139	100	135	80	64	125	~ 205	~ 160	4-Ø10	~ 478	G or NPT 3/8	G or NPT 3/8
MRE 18/37	MRE 24/37 MRE34/37	96	139	125	165	90	64	140	~ 235	~ 175	4-Ø10	~ 509	G or NPT 3/4	G or NPT 3/4

Power & 1.5Kw 2P 90L B34

Pumps order NO.		A	B	C	D	E	F	G	H	J	K	L	M	N
MRC 8/37	MRC12/37	74	155	100	135	80	64	125	~ 205	~ 160	4-Ø10	~ 534	G or NPT 3/8	G or NPT 3/8
MRE 18/37	MRE 24/37 MRE34/37	96	155	125	165	90	64	140	~ 235	~ 175	4-Ø10	~ 555	G or NPT 3/4	G or NPT 3/4

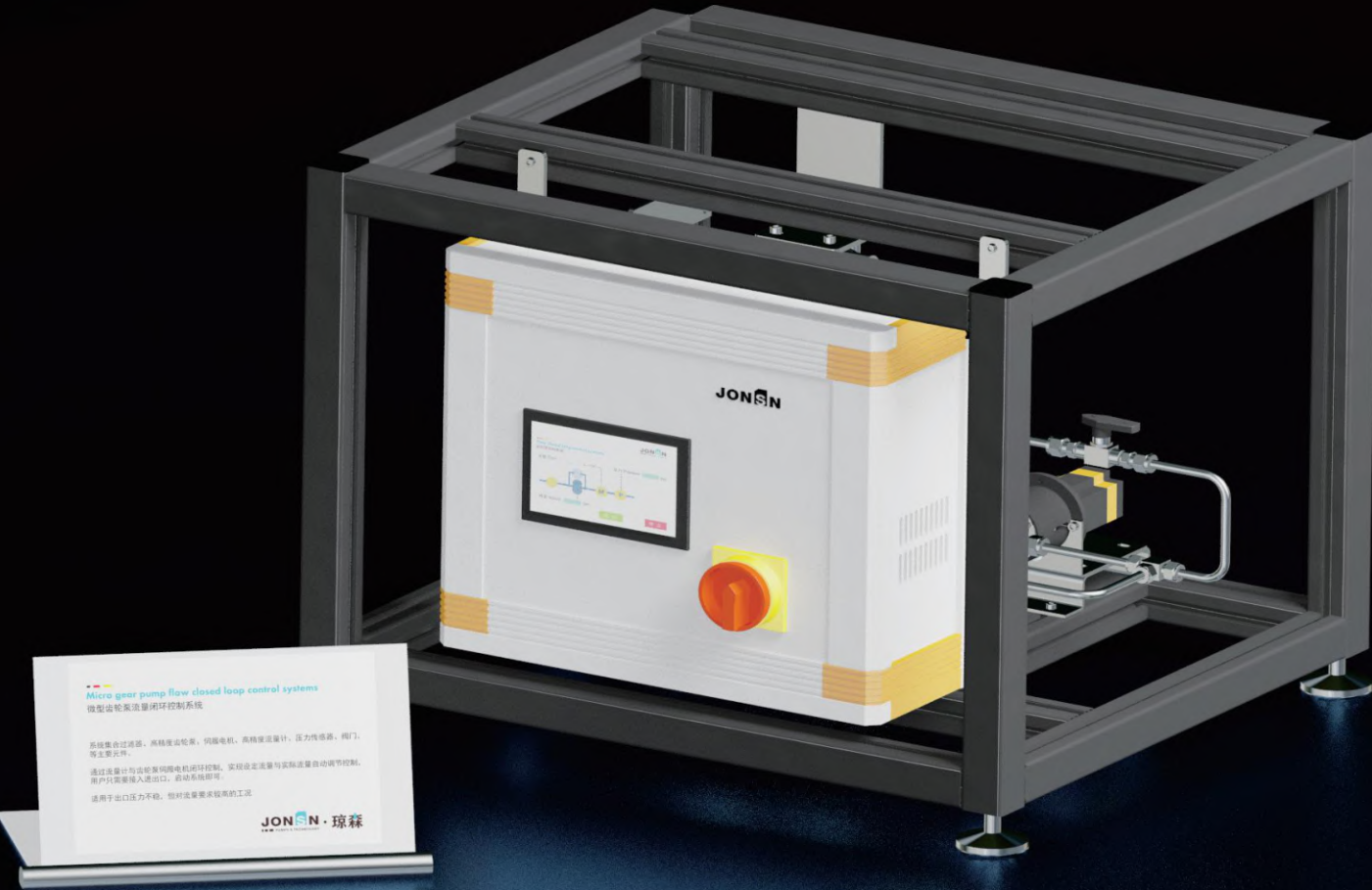
Power & 2.2-3Kw 2P 100L B34

Pumps order NO.		A	B	C	D	E	F	G	H	J	K	L	M	N
MRE 18/37	MRE 24/37 MRE34/37	96	174	140	180	100	64	160	~ 275	~ 200	4-Ø12	~ 584	G or NPT 3/4	G or NPT 3/4

We are deeply involved in micro flow rate on-line precision transporting field.

We have been service to domestic and foreign key laboratories, scientific research institutes, enterprises and institutions, etc.

Precision micro gear pumps are applied in semi-conductor, nuclear industry, special material producing, fine chemical industry.



With extensive fluid control expertise, we are able to supply you with professional micro flow solutions.

SELECTION PARAMETERS

Customer codeAddress

companyExtension

NameFax

DepartmentE-Mail

Medium

NameViscositycps

Application areasMedium temperature°C

Concentration%Ambient temperature°C

Whether explosive

☐ Yes☐ No

Solid content

☐ Yes☐ No☐ Soft☐ Hard

DensityMedia status

☐ Fluidity☐ Thixotropy☐ Sticky☐ Curing

Operating conditions

flowL/min orL/hOutlet pressurebar

Inlet pressurekpaMWorking frequency

☐ Continuous Intermittent☐ Intermittent

VacuumKpa

Drive motor

☐ Single phase

☐ 24V BLDC motor

☐ Three phase

☐ 24V Stepper motor / 220 Servo motor

Application conditions

☐ No pulsation in the mouth

☐ Metering spray

☐ Cool down

☐ Wash

☐ Pressurization

☐ Circulation

☐ Lubricating

☐ Other

Your requirements

Please describe your application here or write down your remarks: